

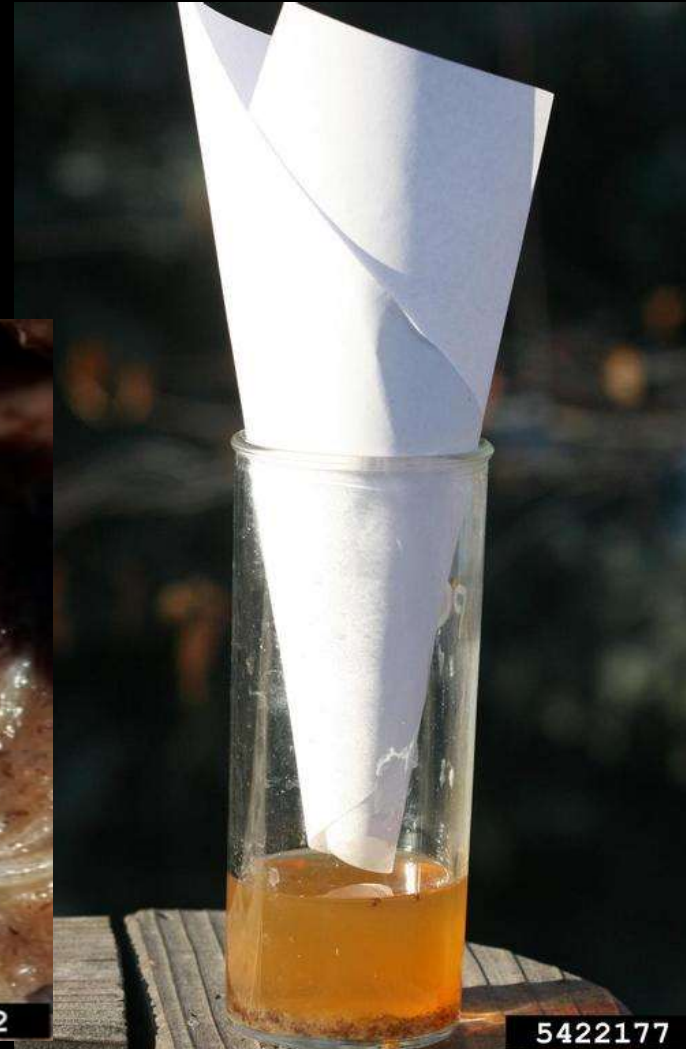
New Fruit Pest Spreading Rapidly in the US

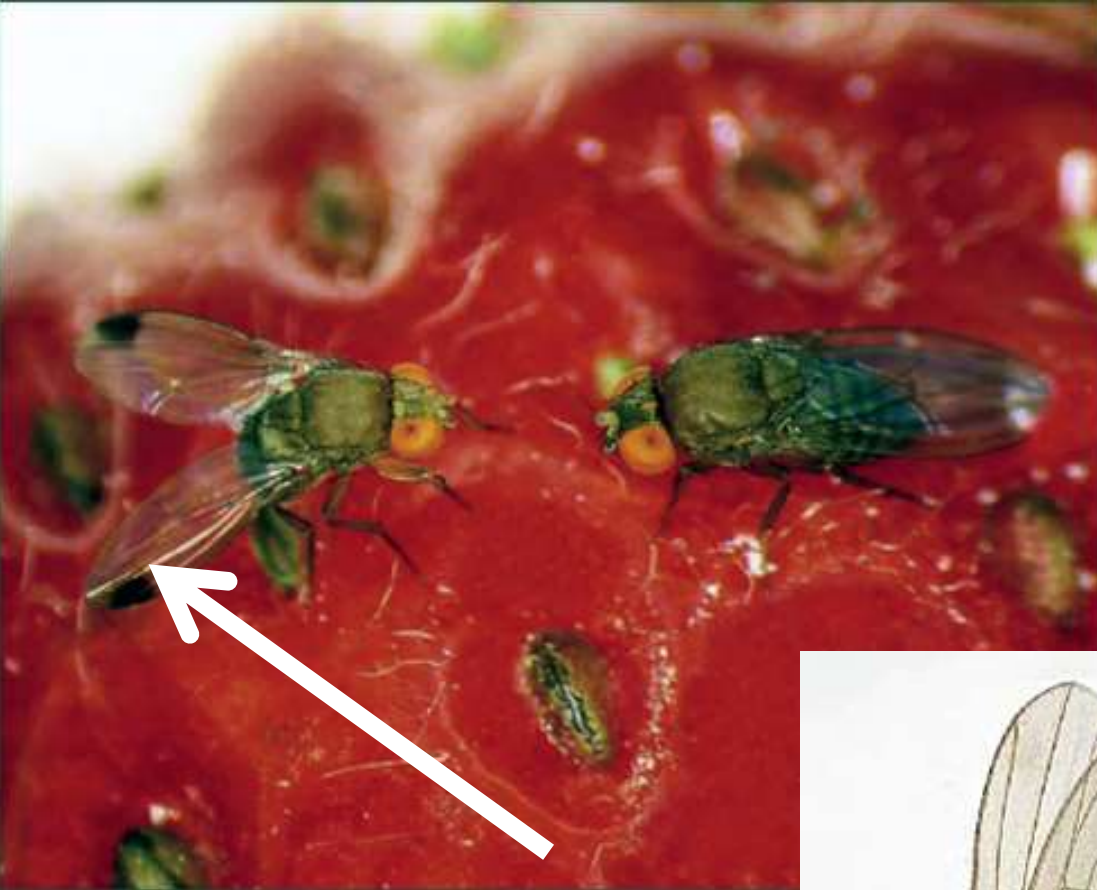
# Spottedwing drosophila

*Drosophila suzukii*

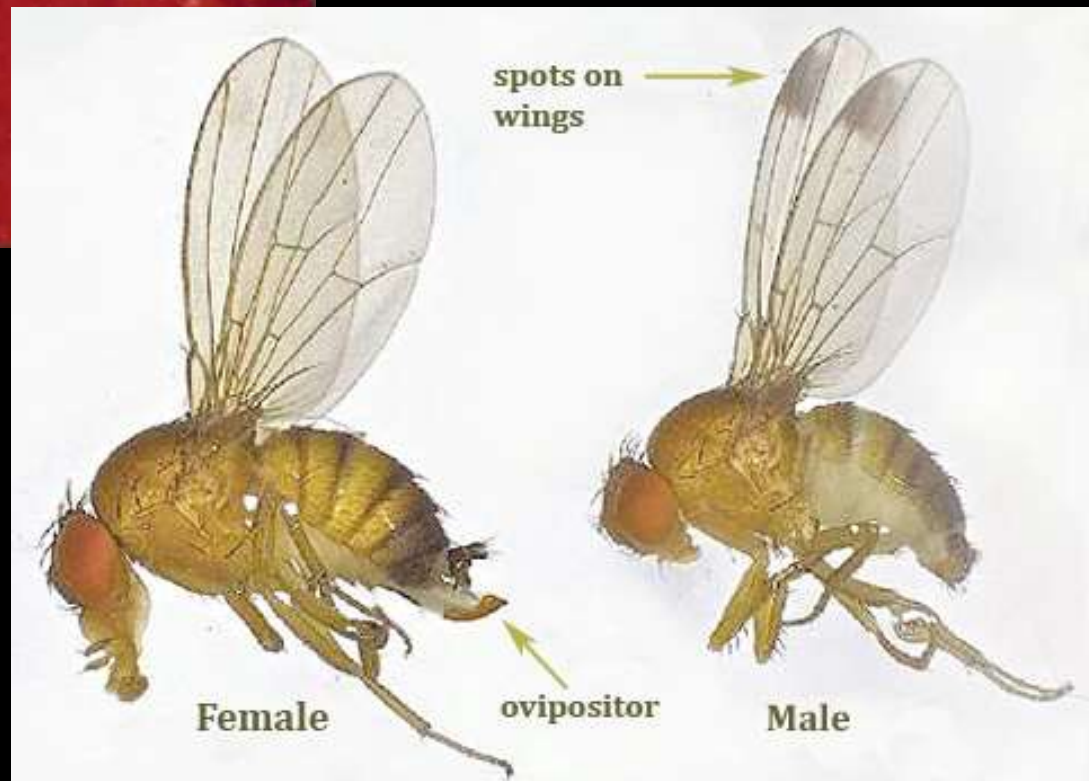


Most *Drosophila* feed on yeasts – they are the common “fruit flies” of overripe fruit



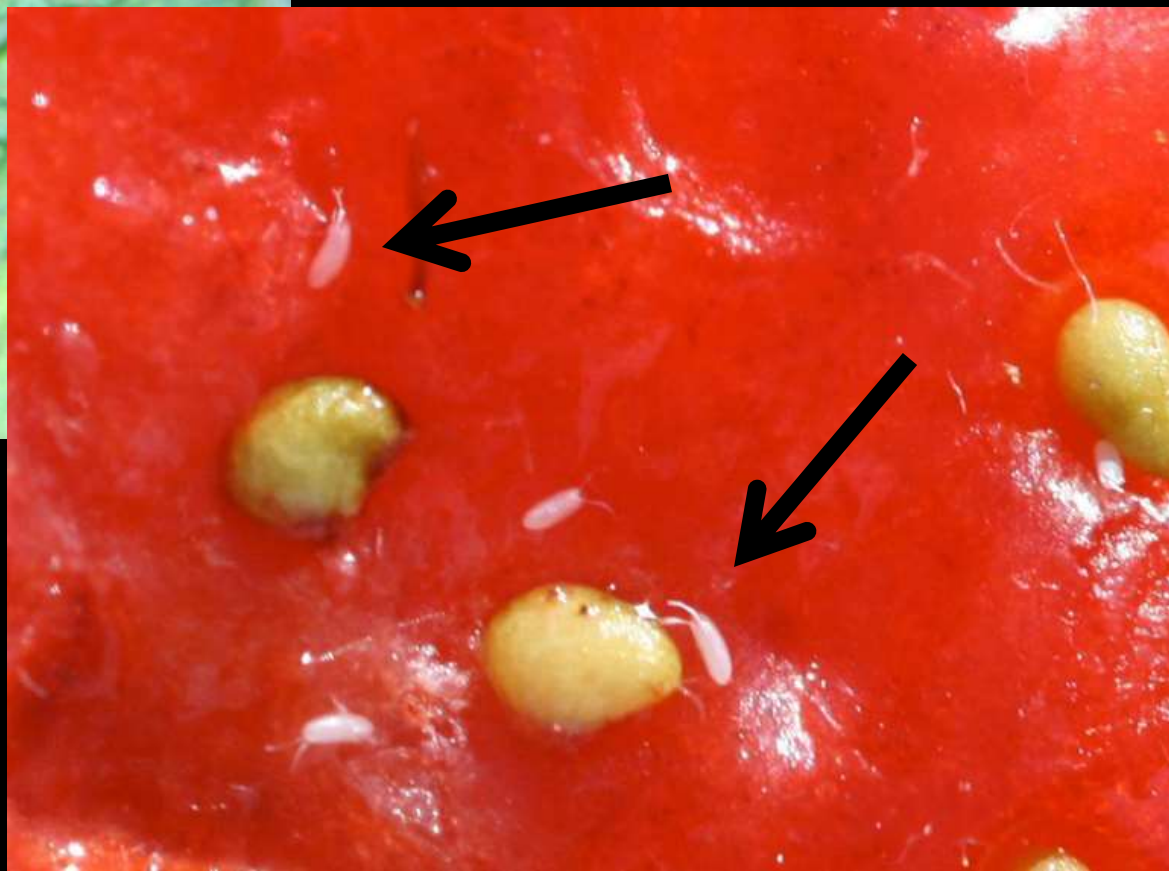


Males of can be distinguished by a spot on the wings



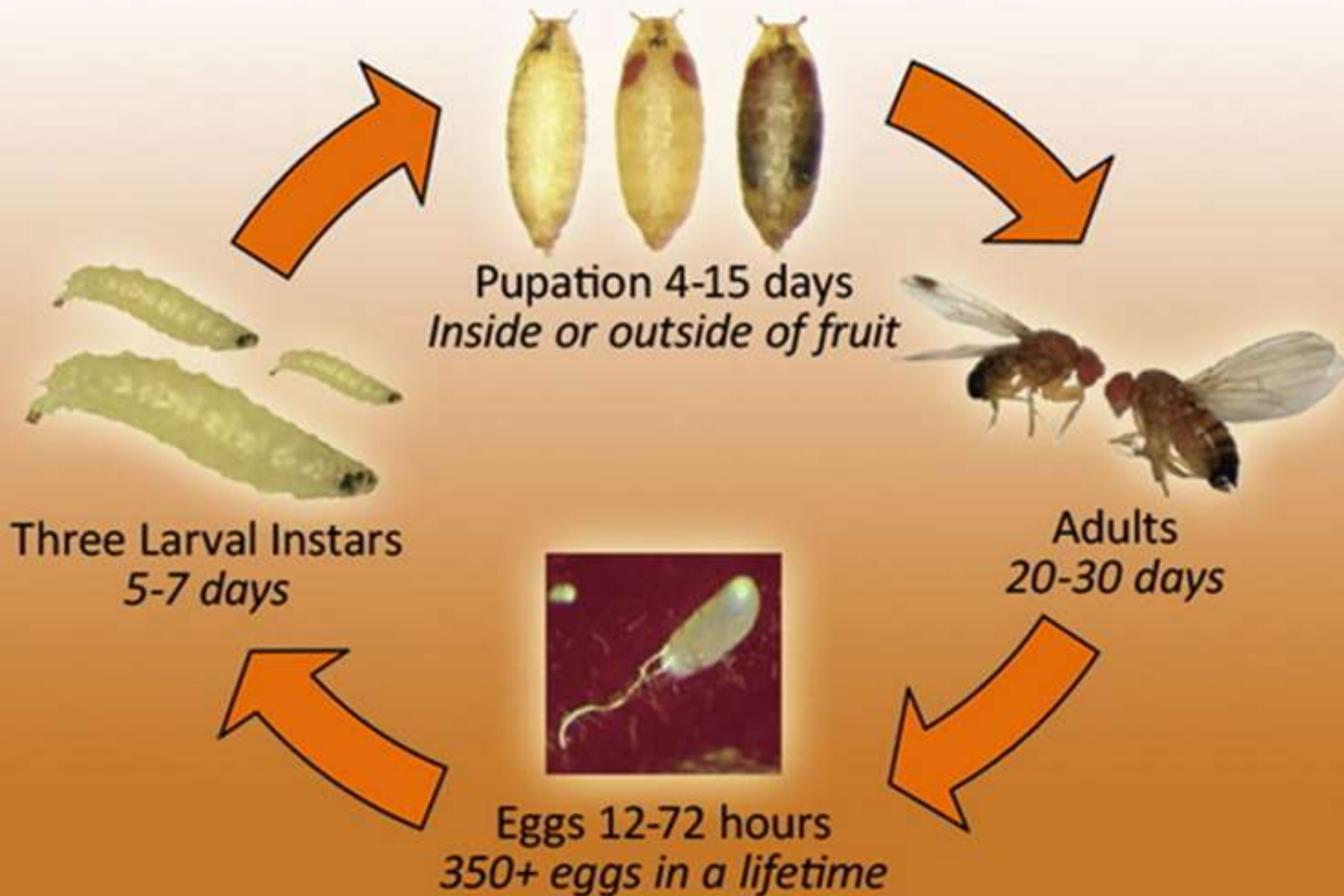


**SWD lays eggs on  
intact, ripening fruit**



# Life Cycle of the Spotted Wing Drosophila

*Drosophila suzukii* (Matsumura)





5444194

**Infestations of  
the developing  
larvae rapidly  
soften the fruit**



5444186

# Spottedwing Drosophila – What To Look For



- **Small maggots in ripening fruit**
  - **Rapid fruit softening results from injury**
  - **Raspberries, blackberries, strawberries most likely to be noticed as infected**
- **Adult male has a spot on the wings**

# Management of Spottedwing *Drosophila*

- **Thoroughly and frequently pick ripening fruit**
  - Store in refrigerator/rapidly use fruit
  - Destroy culled fruit in manner that kills developing larvae
- **Shift to early bearing cultivars**
- **Mass trapping?**
- **Insecticide?**





## Control of SWD

**Thoroughly pick all ripe fruit regularly (2-3X weekly)**





Many fruits  
are hosts of  
spottedwing  
drosophila

Damages by *D. suzukii* on different fruits  
(Photo A. Grassi)

**Question:** *How important are the fruits produced by trees/shrubs as food sources for this new insect pest of berry crops?*

# Host Range Survey of SWD Hosts – Preliminary Results

- **Highly susceptible**
  - Raspberries, blackberries, strawberries
- **Support some SWD**
  - Honeysuckle, elderberries, yew, *ripe* apples/crabapples, hawthorn, at least some cotoneaster, .....
- **Apparently do not support SWD**
  - Russian olive, viburnum

# Management of Spottedwing *Drosophila*

- Thoroughly and frequently pick ripening fruit
  - Store in refrigerator/rapidly use fruit
  - Destroy culled fruit in manner that kills developing larvae
- Shift to early bearing cultivars
- Mass trapping?
- Insecticide?

## Traps for Spottedwing Drosophila



**Cups filled with apple cider vinegar (or merlot wine!) effectively capture SWD**



5444190

# Management of Spottedwing *Drosophila*

- Thoroughly and frequently pick ripening fruit
  - Store in refrigerator/rapidly use fruit
  - Destroy culled fruit in manner that kills developing larvae
- Shift to early bearing cultivars
- Mass trapping?
- Insecticide?
  - Spinosad
  - *Only applied at evening after bees cease visiting!*