

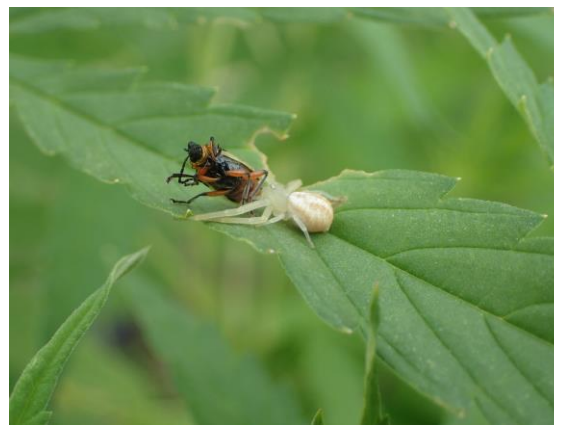
Spiders

Spiders are very important natural enemies of plant feeding insects in all cropping systems.

To date, the specific types of spiders that are present in hemp crops have not been described; undoubtedly, spiders are among the most important natural enemies of insects that occur on hemp, particularly in outdoor plantings. Spiders observed in hemp to date include species in at least four spider families: Thomisidae/Crab Spiders, Salticidae/Jumping Spiders, Oxyptodidae/Lynx Spiders, and Araneidae/Orbweaver Spiders).

Further identification of spiders that are important in hemp crops is a project goal for the Hemp Insect Web Site Project and will be a focus of attention in 2017.

Araneae: Thomisidae, Salticidae, Araneidae, Oxyptodidae, others



Examples of spiders found in hemp: (top) crab spider with prey; (middle) jumping spider; (bottom) an orb-weaver spider.