

# Viticulture and Enology

- Phylloxera
- Fruit Quality
- Regional Climate Suitability for Vineyards
- Vineyard Horticulture Best Practices
- Nutrient Effects of Vineyard Floor Management
- Wine Quality and Cold Hardy Varieties
- Industry Fruit and Wine Production



Colorado State University  
COLLEGE OF AGRICULTURAL SCIENCES



# Pomology

- Cytospora Canker in Peaches
- Environmental Factors Affecting Fruit Quality
- Root Stock / Scion Physiology
- Cold Acclimation
- BANR - Biochar Amendments
- Orchard Management and Training Peaches/Cherries/Apples
- Rhizosphere Biome



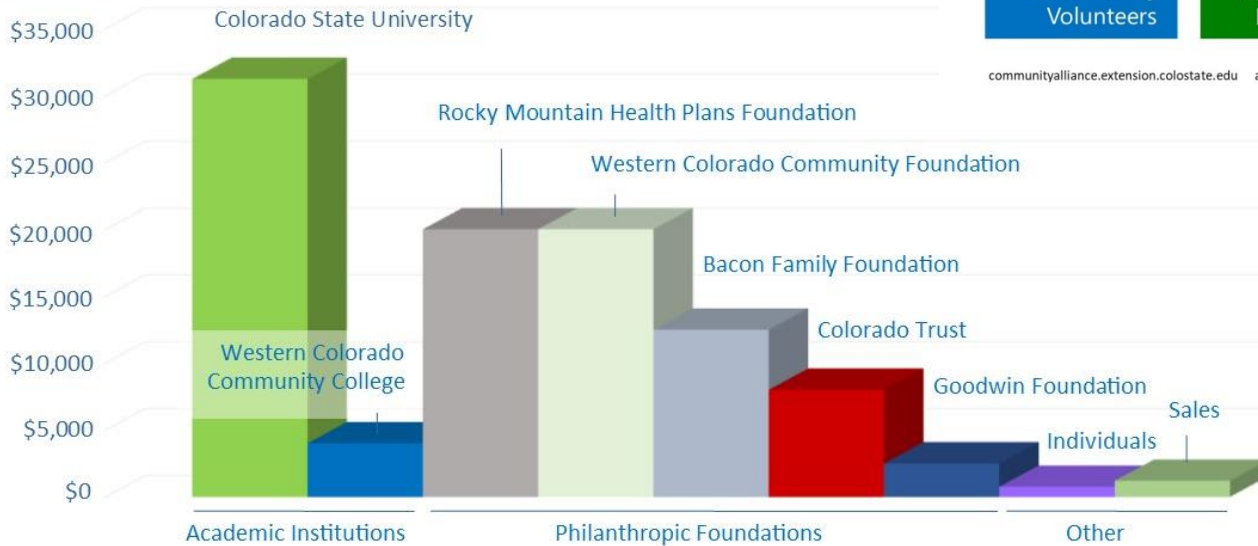
Colorado State University  
COLLEGE OF AGRICULTURAL SCIENCES



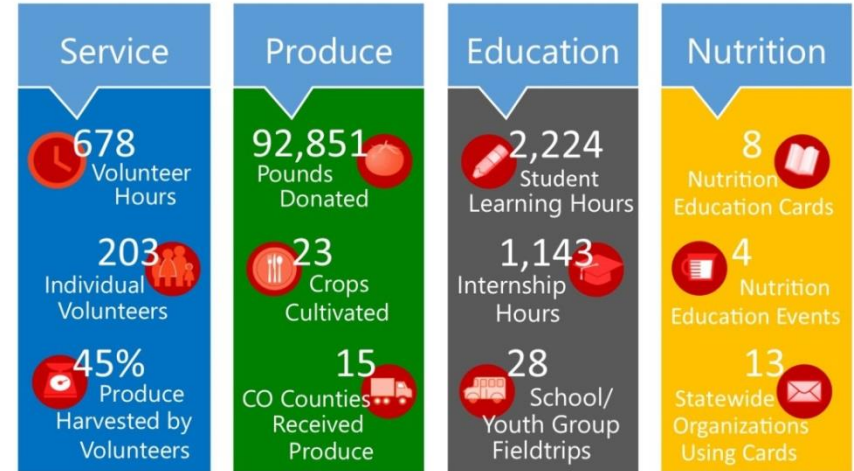
# Community Alliance

- Exceeding all Expectations
- Funded through 2018
- AES / Extension / WCCC / Community Partners

Total Income 2017—\$100,392



2017 Year Totals



communityalliance.extension.colostate.edu amanda.mcquade@colostate.edu Community Alliance for Education and Hunger Relief

