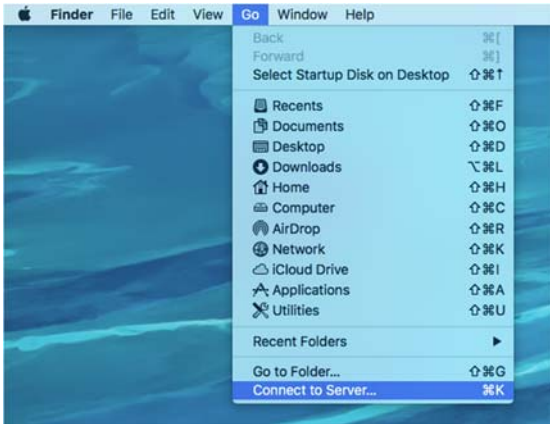
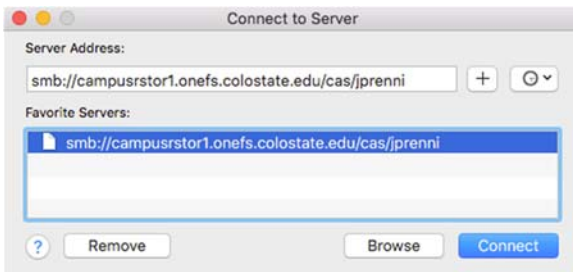


RSTOR – Connecting from Apple Computers

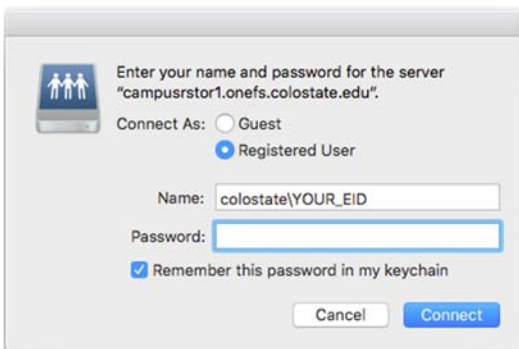
- Open **Finder** → select “**Go**” from the top tool bar → select “**Connect to Server...**”



- In the “**Server Address**” field, type the RSTOR address ending with your *<unique_lab_id>*, which will have been provided by CASIT during the initial setup of your RSTOR drive.
 - Format for the address is: **smb://campusrstor1.onefs.colostate.edu/cas/<unique_lab_id>**
- Click the “+” symbol to add it to your “Favorite Servers” list for easy access in the future.
- Highlight the server in your Favorite Servers list → Click “**Connect**”



- You will receive a prompt for credentials.
 - Name = **colostate\your_eid** Password = **your_eid_password**
 - Check the “Remember this password in my keychain” box if this is your personal Mac.



Creating a shortcut to RSTOR on your Desktop

You should already be connected to RSTOR at this point and can access it via Finder. To make RSTOR easier to get to, we suggest creating a shortcut (alias) on your desktop.

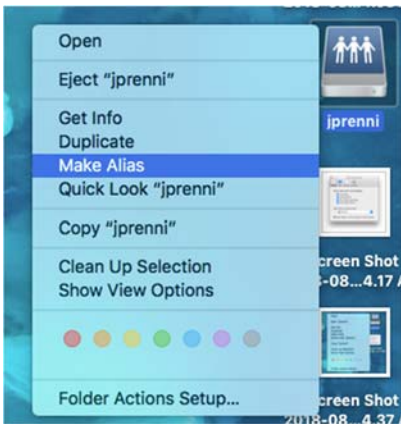
- Open **Finder** → Select “**Finder**” from the top tool bar → Select “**Preferences**”



- Check the “**Connected servers**” checkbox (by default this is unchecked)



- You should now see a Server icon on your desktop that is labeled with the `<unique_lab_id>` for your lab. Right click on this **Icon** → Select “**Make Alias**”



- Your alias icon will now be on the Desktop, this is essentially a shortcut to RSTOR.



- You can rename this shortcut so that it has a more descriptive name and it is easier to understand what the shortcut is taking you to. Right click on the **Alias icon** → Select **“Rename”**.



- Turn off **“Connected Servers”** by selecting **Finder** → **“Preferences”** → Uncheck the **“Connected Servers”** checkbox .



You should now be connected to RSTOR and have an easy to access Shortcut on your desktop!

- If you have issues connecting, please submit a work order to AgHelpDesk@colostate.edu