



United States Department of Agriculture

Economic  
Research  
Service

Economic  
Research  
Report  
Number 194

September 2015

## Household Food Security in the United States in 2014

Alisha Coleman-Jensen

Matthew P. Rabbitt

Christian Gregory

Anita Singh

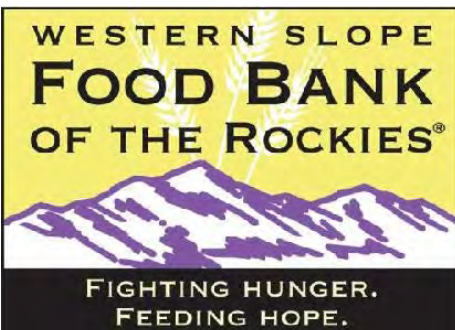
12.9% of people in Colorado live in poverty.

18.1% of Colorado children live in poverty and  
8.0% are living in extreme poverty.



**CARE AND SHARE™**  
FOOD BANK FOR SOUTHERN COLORADO

34% of clients receiving food through our partner agencies are children. Adding in our Totes of Hope™ – Children, Kids Cafe and Snacks programs, children make up about half of the clients served through Food Bank of the Rockies.

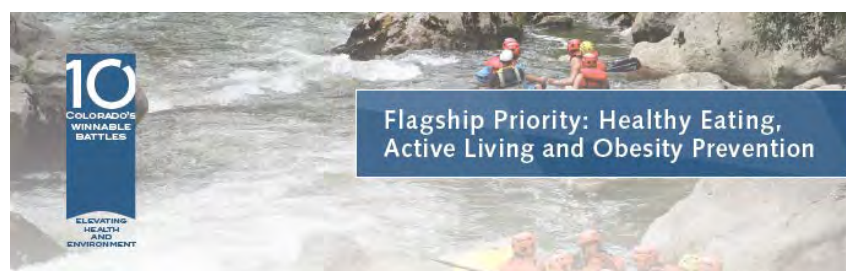


Healthy Colorado:

# Shaping a State of Health

Colorado's Plan for Improving Public Health and the Environment

2015-2019



Flagship Priority: Healthy Eating, Active Living and Obesity Prevention

2. Improve nutrition and physical activity environments for children younger than 18 years via early childhood education centers and schools, especially those that serve low-income populations.

**Objective 1:** By 2020, at least 60 percent of the 900 participating Child and Adult Care Food Program (CACFP) child care programs<sup>9</sup> will prepare meals that meet Colorado healthier meals initiative standards<sup>10</sup> for children in their care.

**Coordinating agency:** CDPHE

**Partners in implementation:** Participating Child and Adult Care Food Program Centers

**Objective 2:** By 2020, increase participation in the Child and Adult Care Food Program (CACFP) after-school meals and snacks and summer food service programs in areas where at least 50 percent of students are eligible for free and reduced meals.

**Baseline:** 363 after-school meals and snacks program sites and 1,499,621 summer meals served in 2014

**Coordinating agencies:** CDPHE and Colorado Department of Education

**Partners in implementation:** Hunger Free Colorado, USDA, CACFP Sponsoring Organizations, Colorado Food Banks, other nonprofit organizations

**Role of local public health:** Convene community stakeholders to determine support for local sponsoring organizations and additional resources to implement the CACFP after school food program in their communities.

**Objective 3:** By 2020, 100 percent of the 179 school districts in Colorado will have farm to school activities.<sup>11</sup> (Data source: United States Department of Agriculture Food and Nutrition Service Farm to School Census)

**Baseline:** 41 percent of school districts in 2013

**Coordinating agency:** CDPHE

**Partners in implementation:** LPHAs, Colorado Farm to School Task Force, Real Food Colorado, United State Department of Agriculture Food and Nutrition Service, Mountain Plains Region, Colorado Department of Agriculture, Colorado Department of Education, school food directors

increase participation in the Child and Adult Care Food Program (CACFP)

**Partners in implementation:** Hunger Free Colorado, USDA, CACFP Sponsoring Organizations, Colorado Food Banks, other nonprofit organizations



Colorado State University

**Carnegie Foundation recognizes CSU's community engagement**

### **Important core mission**

“Engagement is among the most important core missions for land-grant universities like Colorado State,” said CSU President Tony Frank. “Meeting the needs of Colorado citizens for information and service has been paramount for CSU for more than a century. These two classifications – **community engagement and community service** – offer well-earned recognition of our faculty’s commitment to serving Colorado and to our overall strength in outreach and programming across the university.”





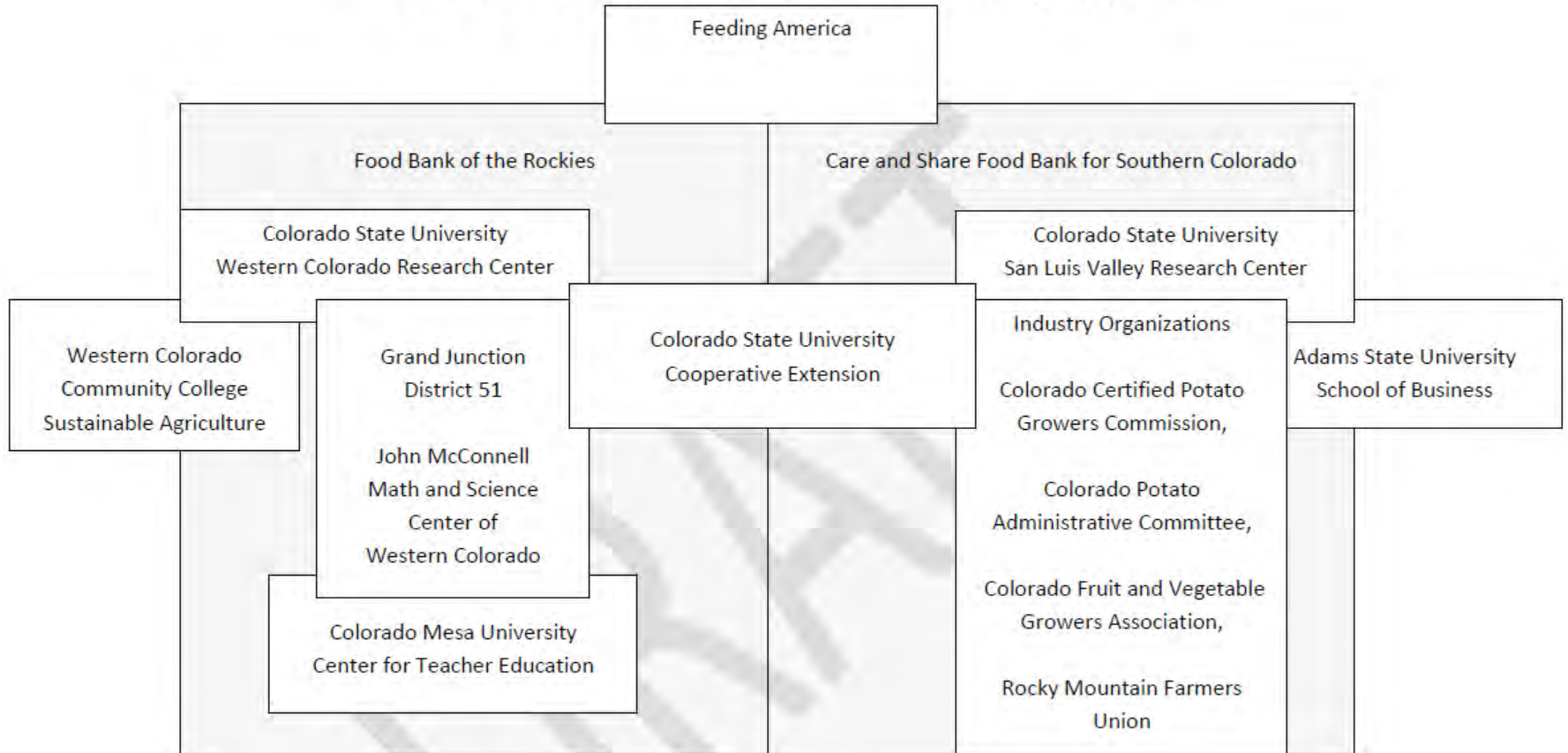
## 7 Elements

1. Direct Quality Produce to FoodBanks
2. Local Agricultural Internships and Service Learning
3. K-12 STEM and Service Learning
4. Research Experience for Teachers
5. Consumer and Family Science
6. Measuring the School Community Perception of Hunger Relief
7. San Luis Valley Commercial Partnerships



**Colorado State University**  
San Luis Valley Research Center

## Collaborative Organization of Service Learning Program



Overlapping text boxes indicate symplastic interaction.  
Disconnected text boxes represent apoplastic interaction.