
2009 Grower Survey

Horst Caspari
Colorado State University
Western Colorado Research Center
Grand Junction, CO 81503
Ph: (970) 434-3264

Survey summary

Survey forms sent	203
Survey forms returned	99
Commercial growers	97
Mail undelivered	0
Not a commercial grower	2
Rate of return	49 %

Non-respondents: established growers

40 growers who provided data in previous surveys did not respond to the 2009 survey

- 132 total acres (~15 % of CO total)
- 132 producing acres

Another ~30 growers have not replied to any of the surveys since 2000.

Definition

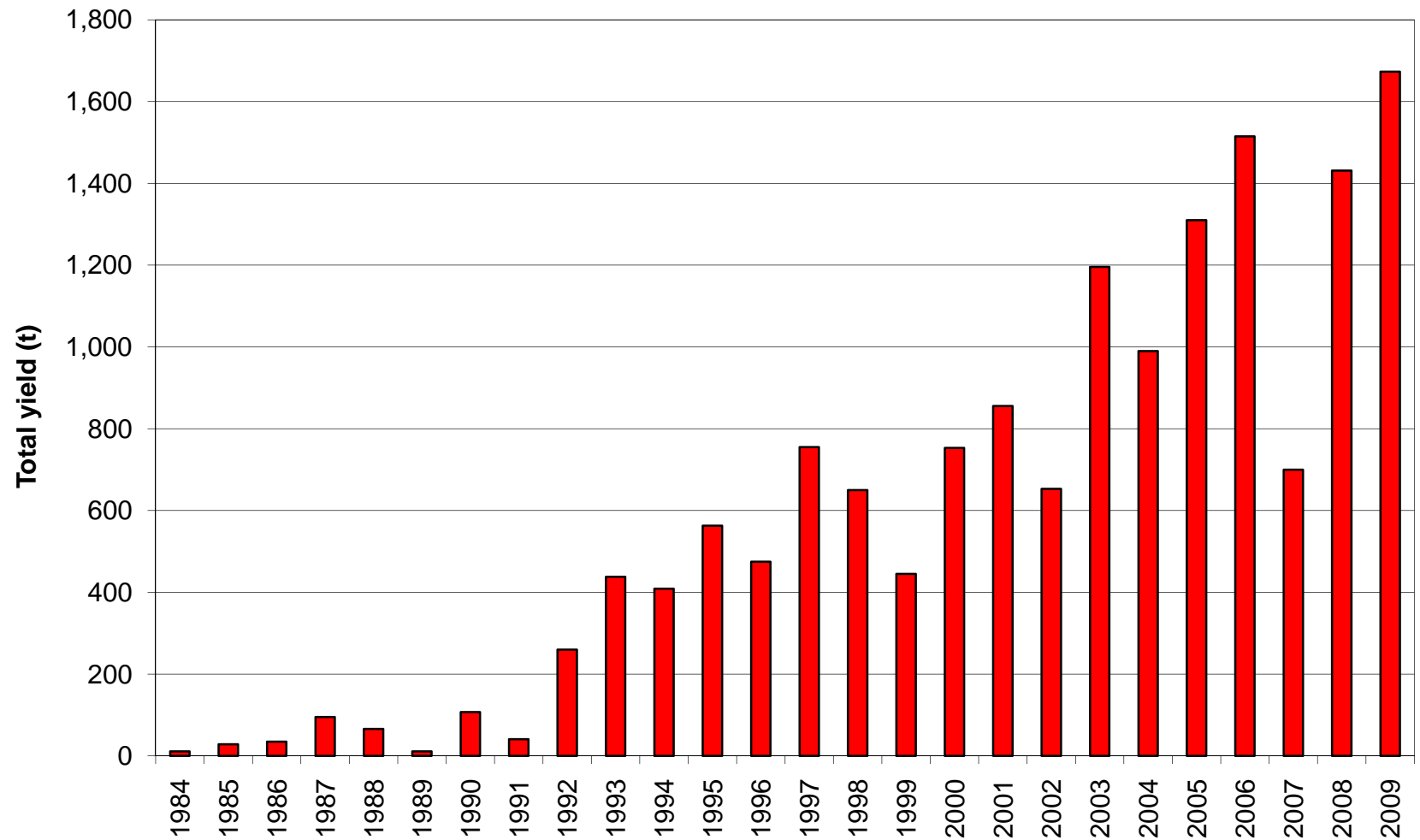
“Producing area”

- vineyards that were planted prior to 2008

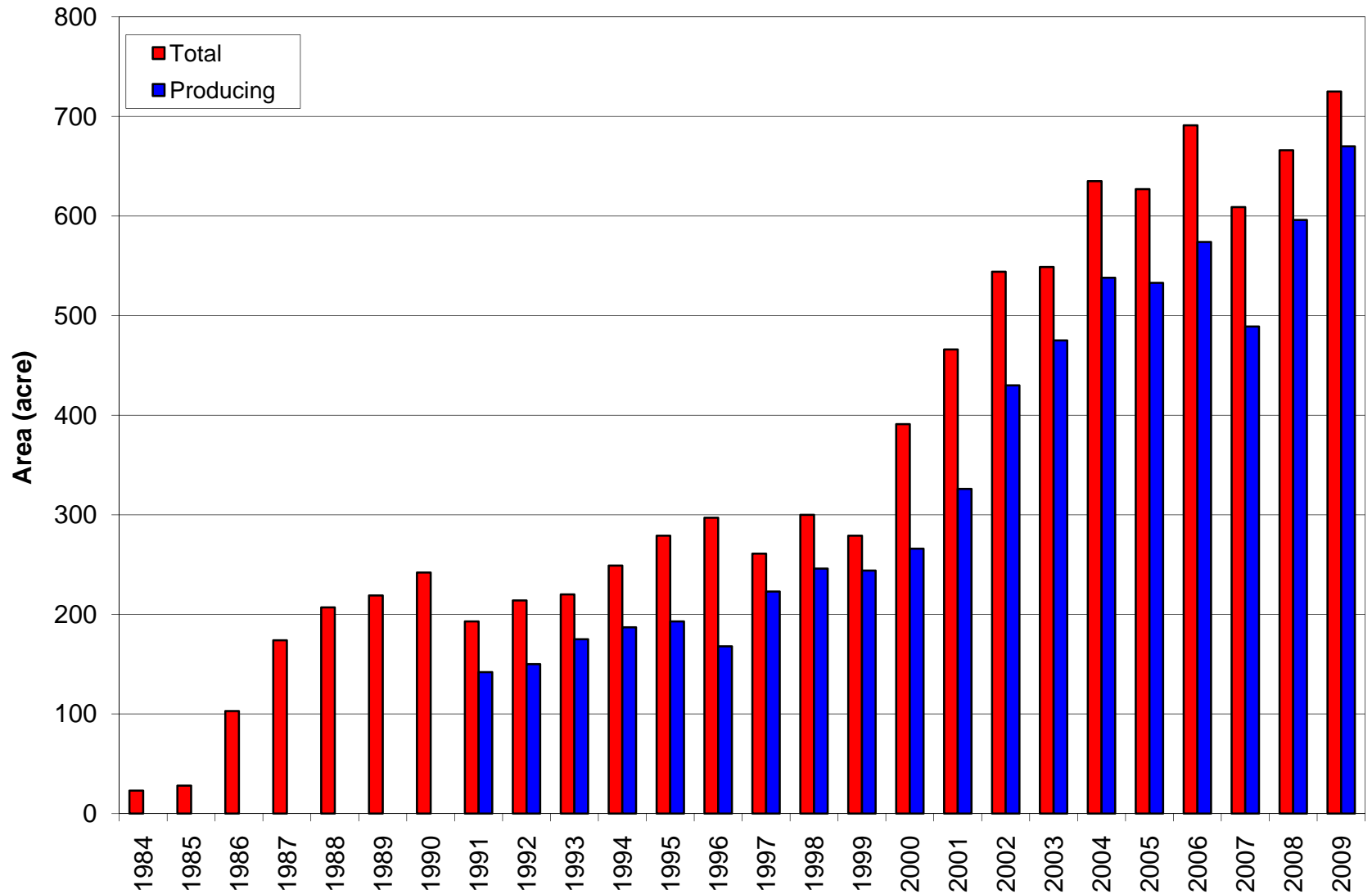
2009 Survey results

Total vineyard area (acre)	726
Wineries	236 (33 %)
Contract growers	490 (67 %)
Producing vineyard area (acre)	670
Wineries	213 (32 %)
Contract growers	447 (68 %)
Average vineyard size (acre)	7.5
Total production (t)	1,665
Average yield (t/acre)	2.5
Average grape price (\$/t)	1,340
Average picking costs (\$/t)	236
Gross return (\$/acre)	4,078

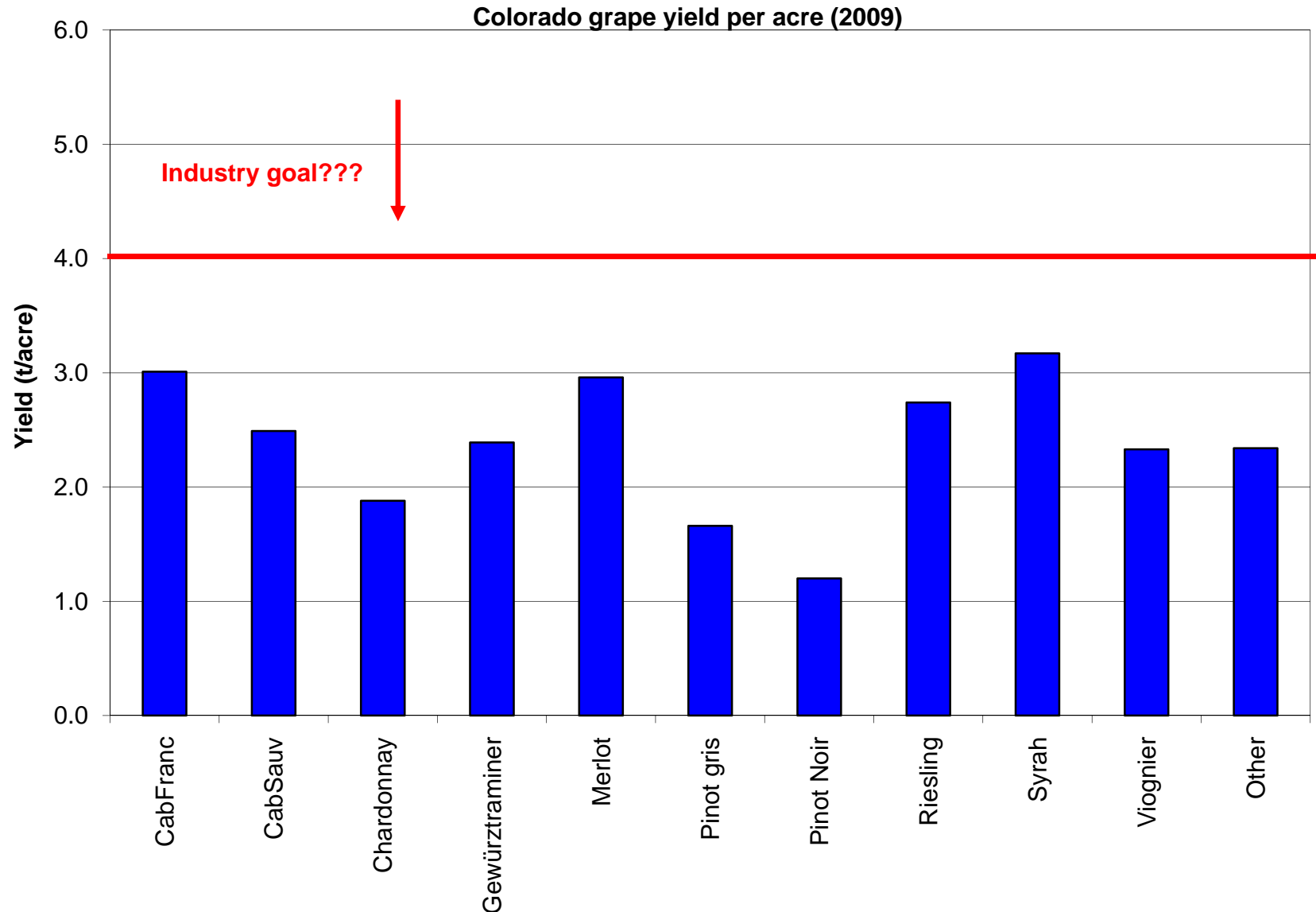
Colorado grape production by year



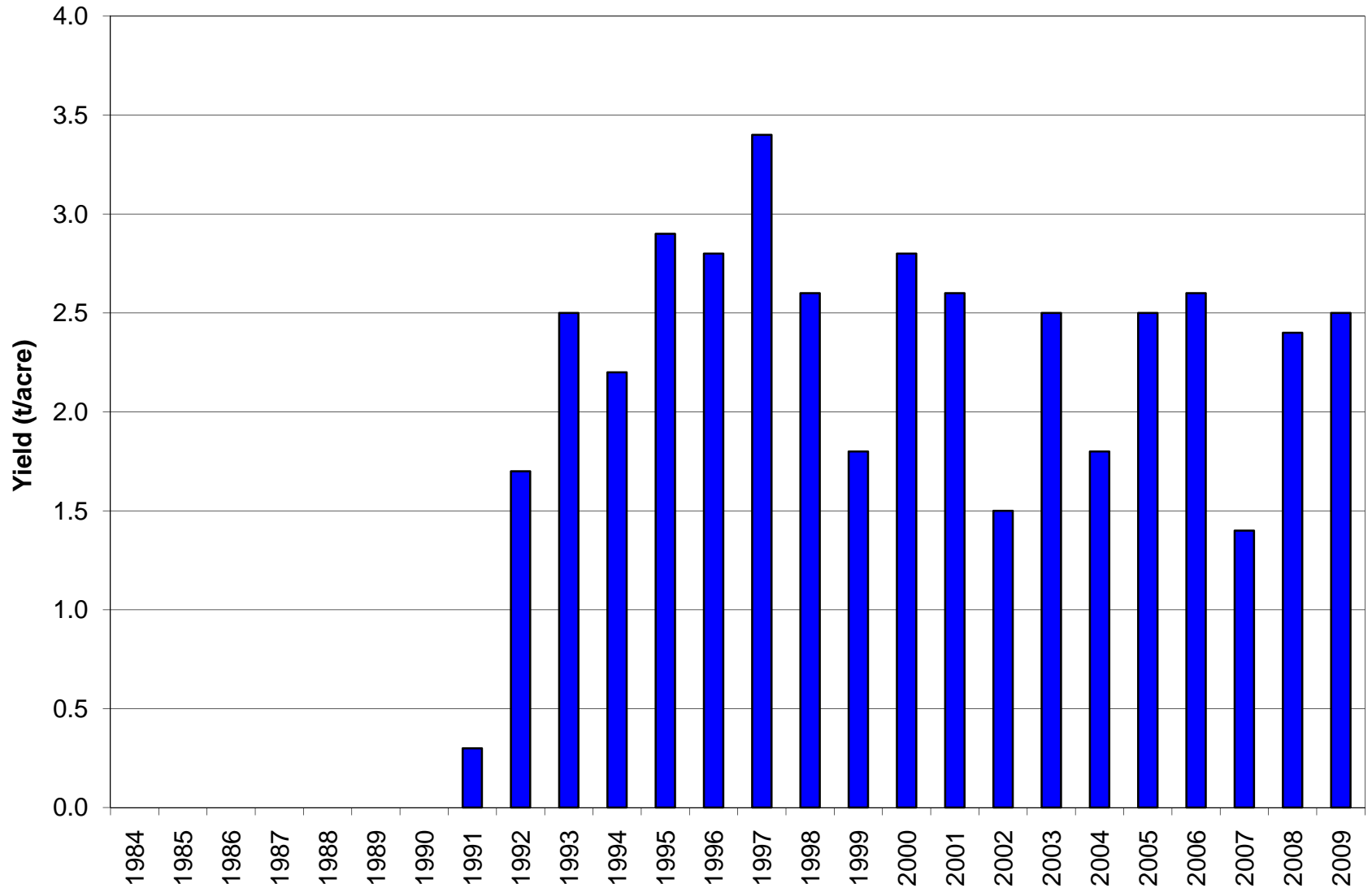
Colorado grape growing area by year



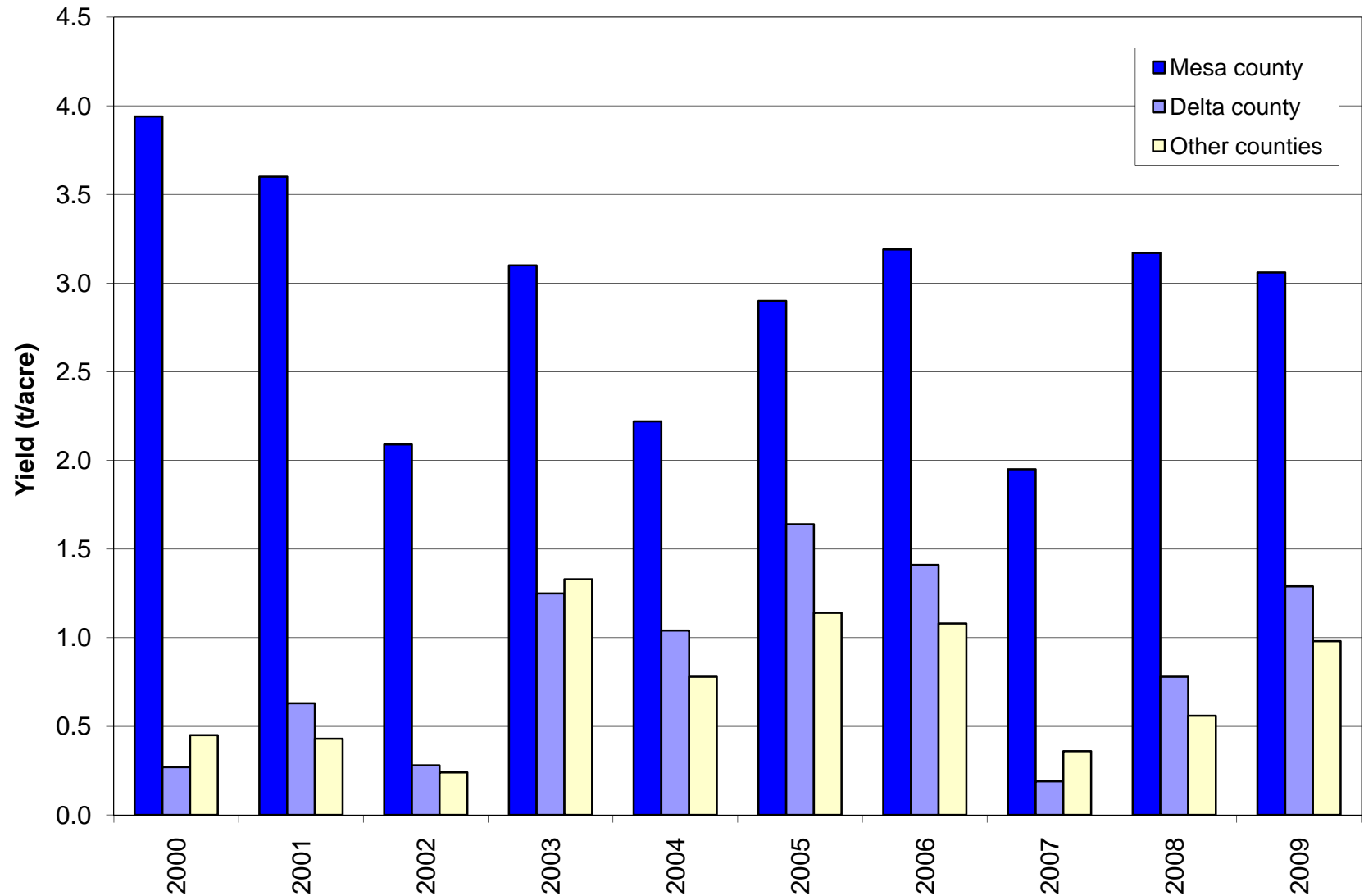
Colorado grape yield per acre by variety



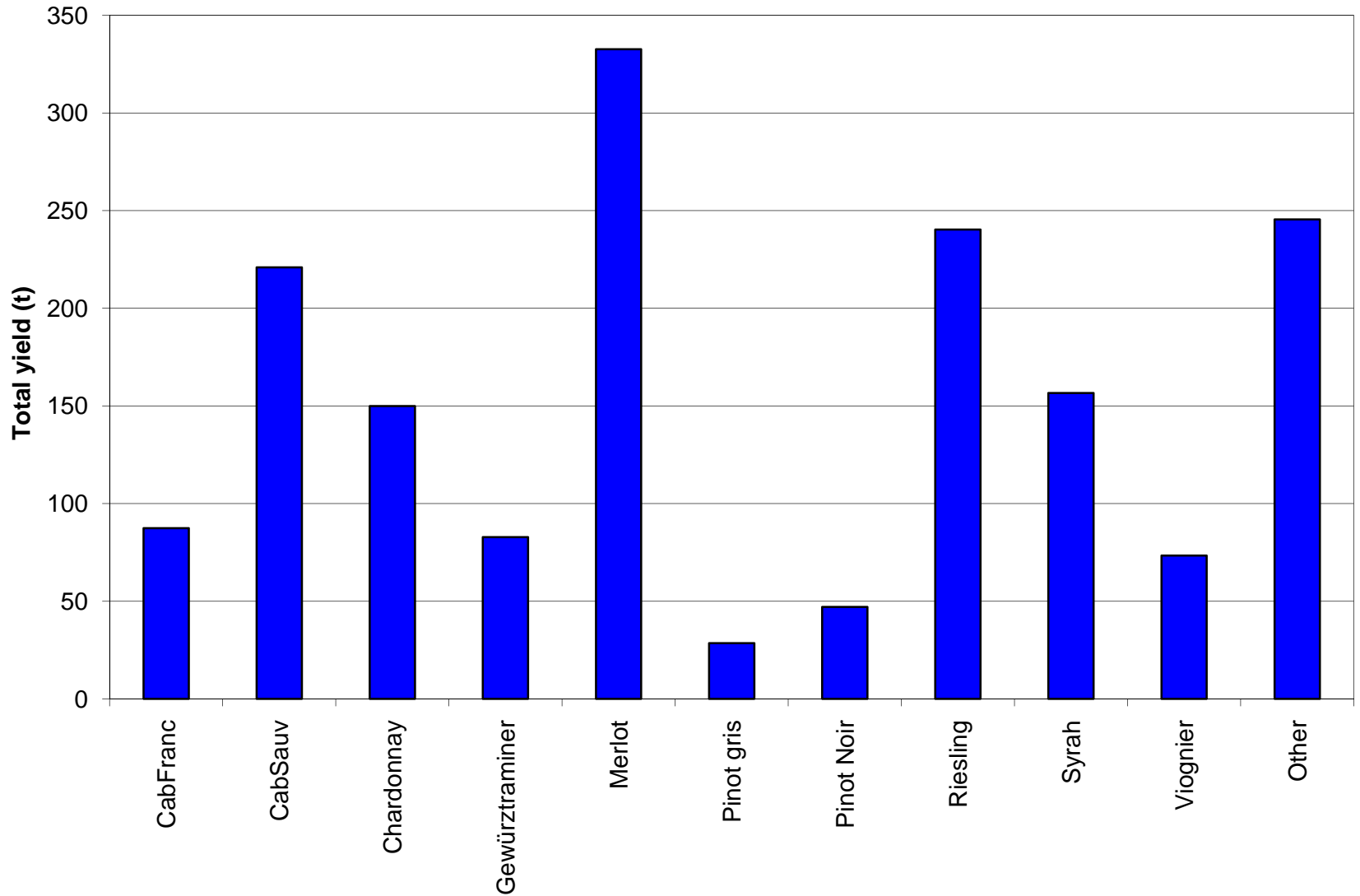
Colorado grape yield per acre by year



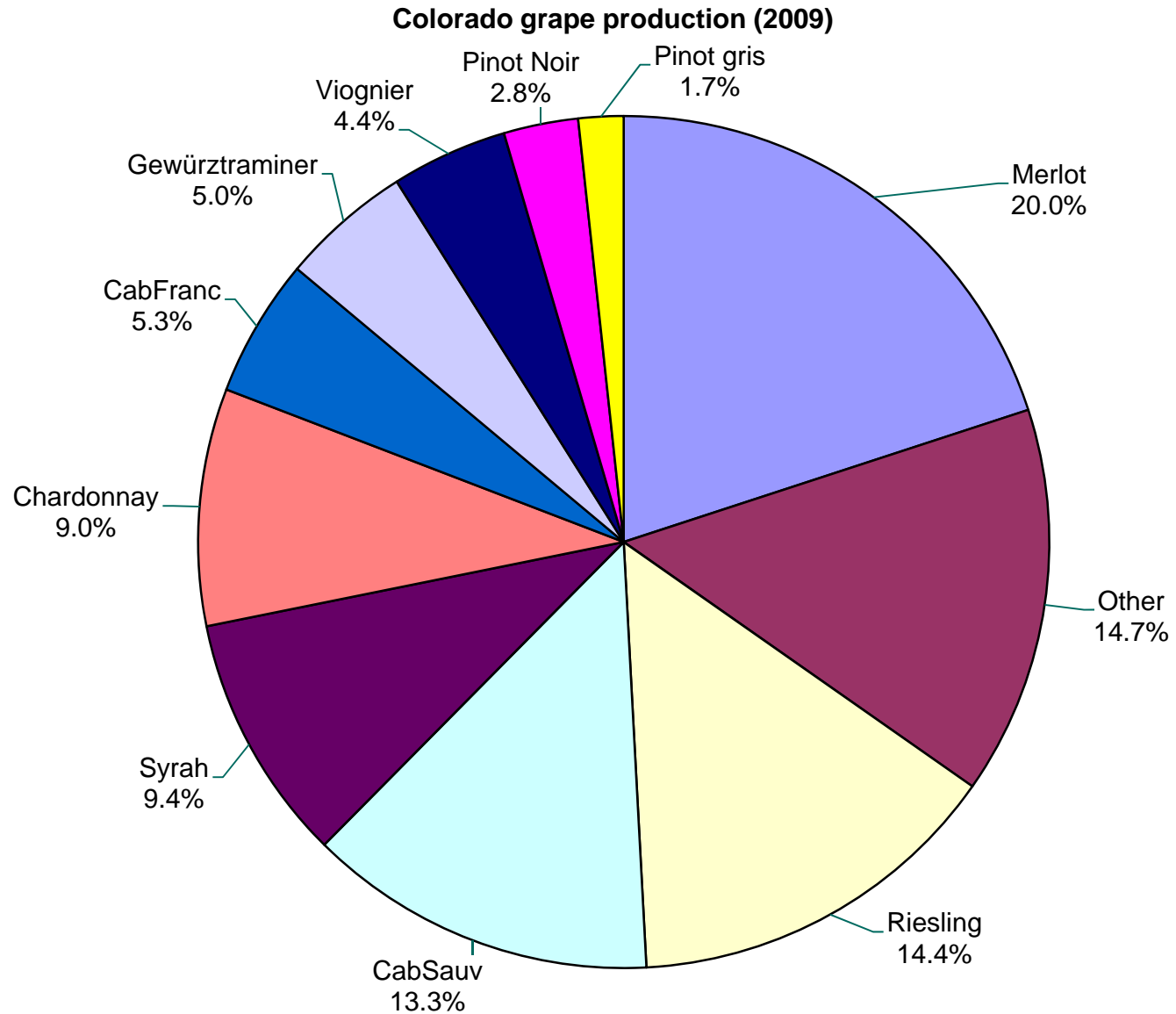
Colorado grape yield per acre by county



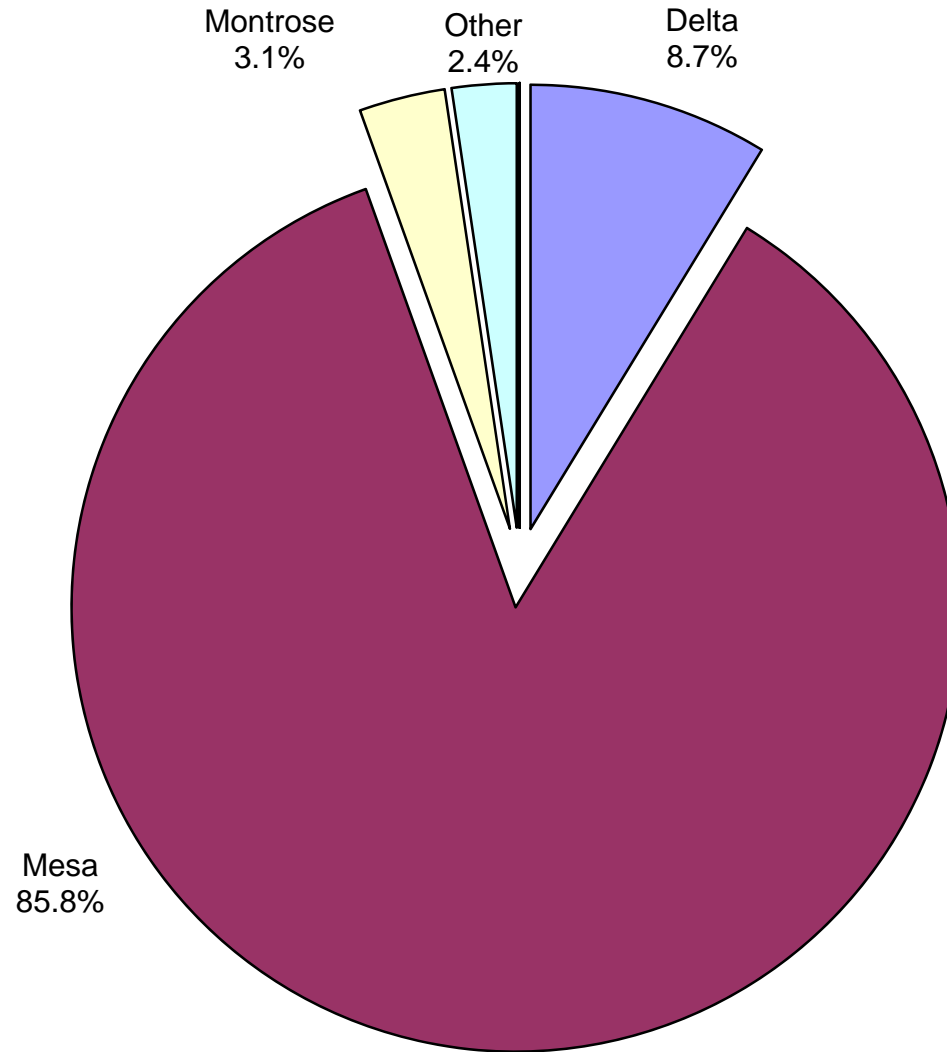
2009 Colorado grape production by variety



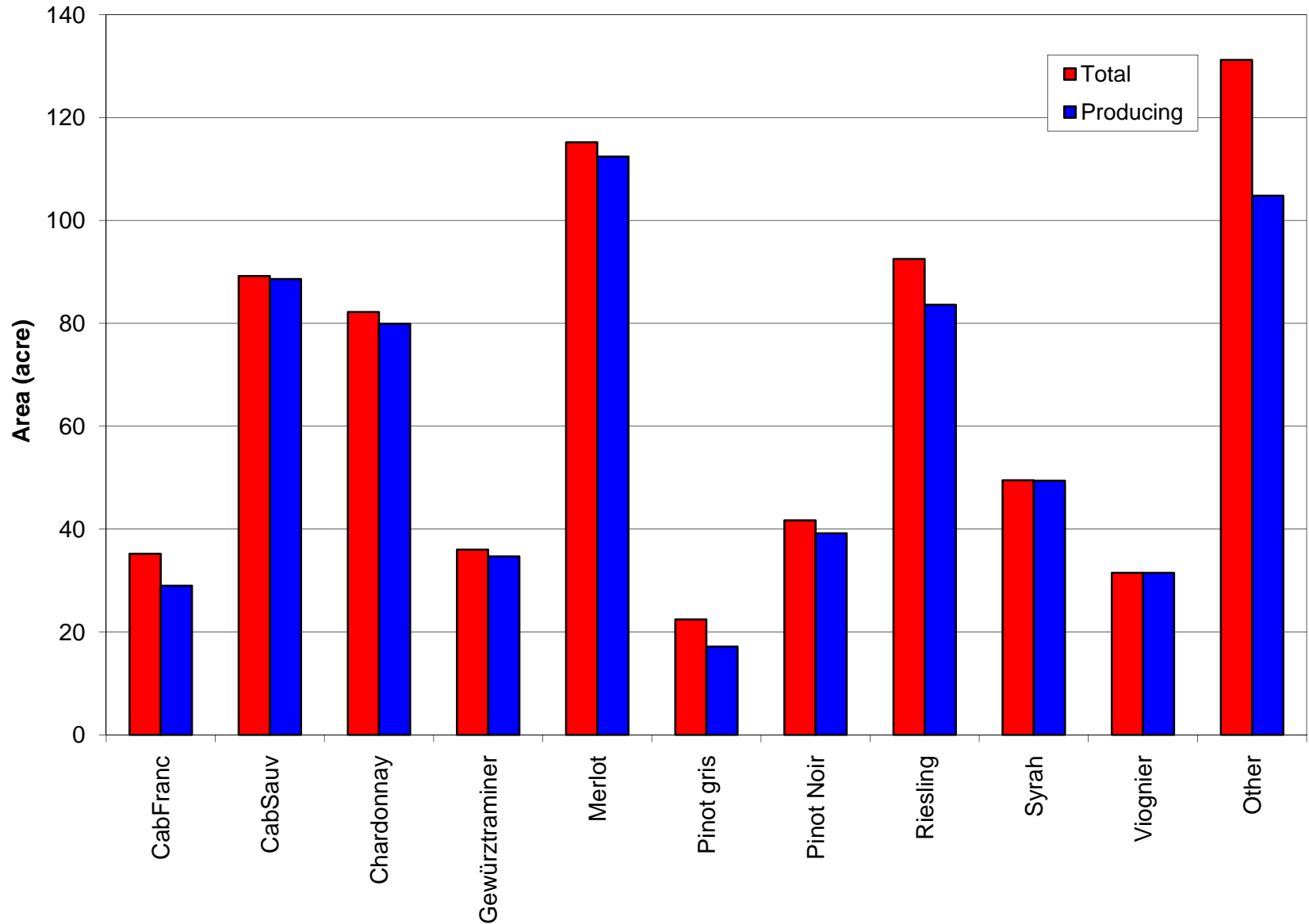
Colorado grape production by variety



2009 Colorado grape production by county

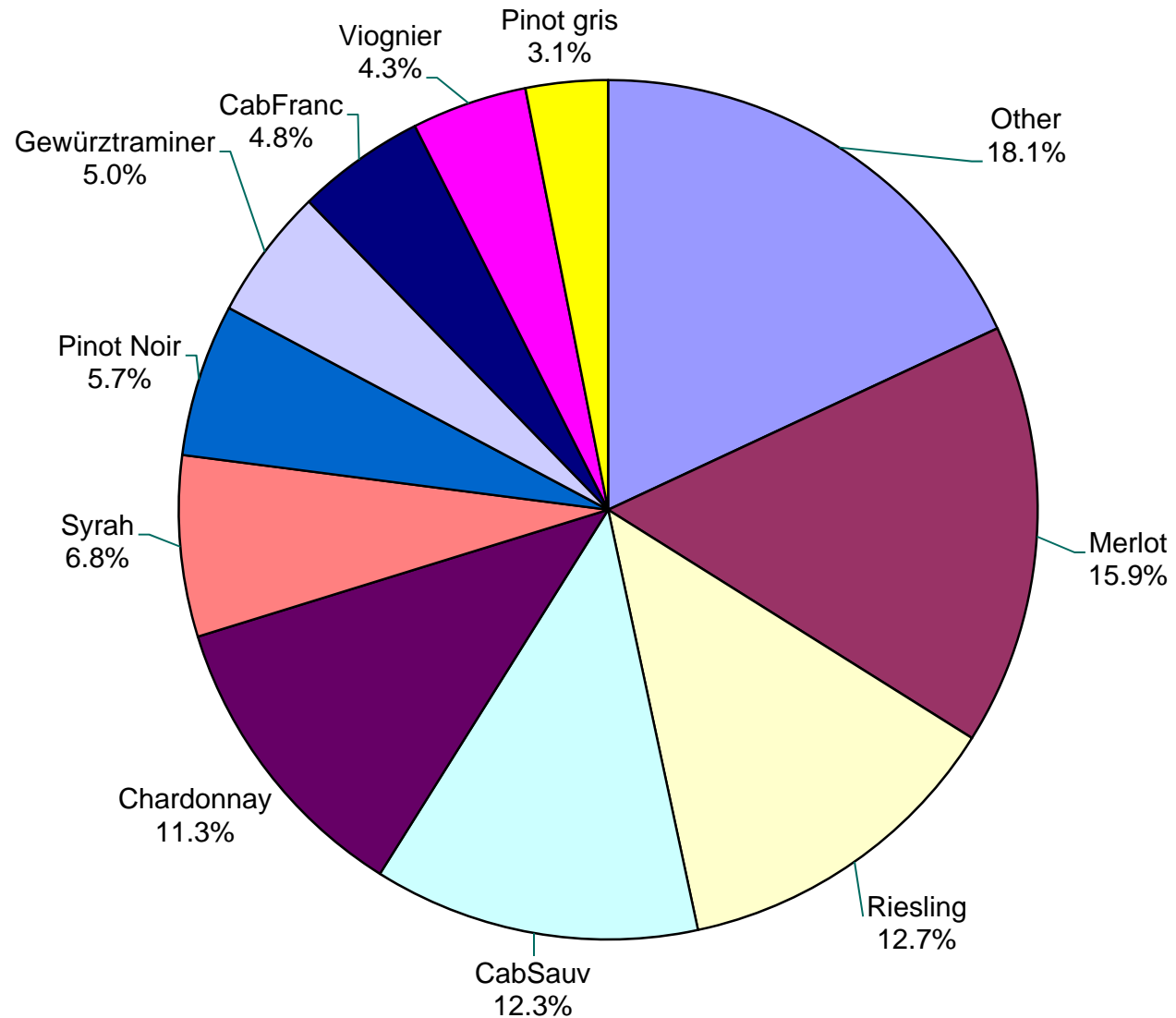


Colorado grape growing area by variety

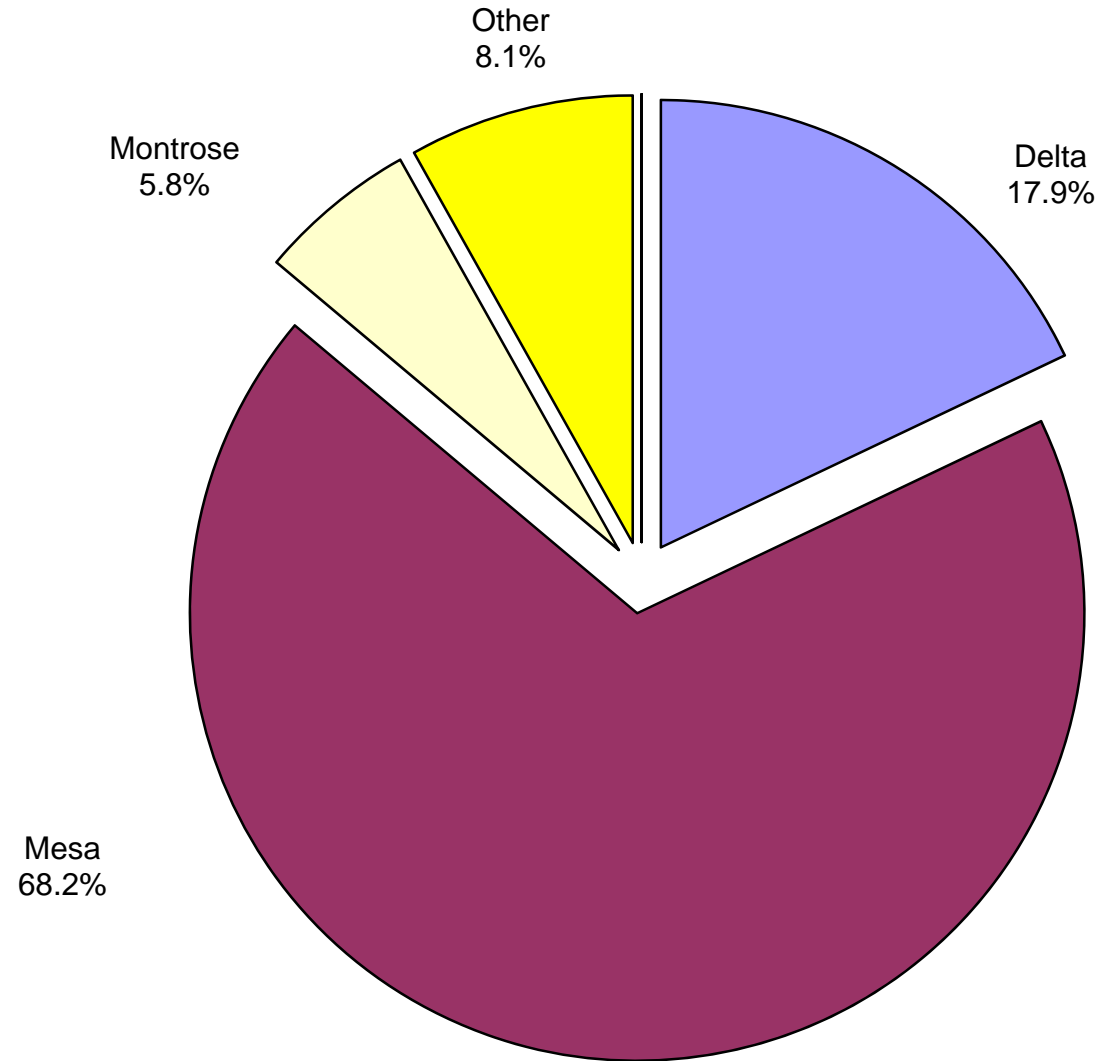


Colorado grape growing area by variety

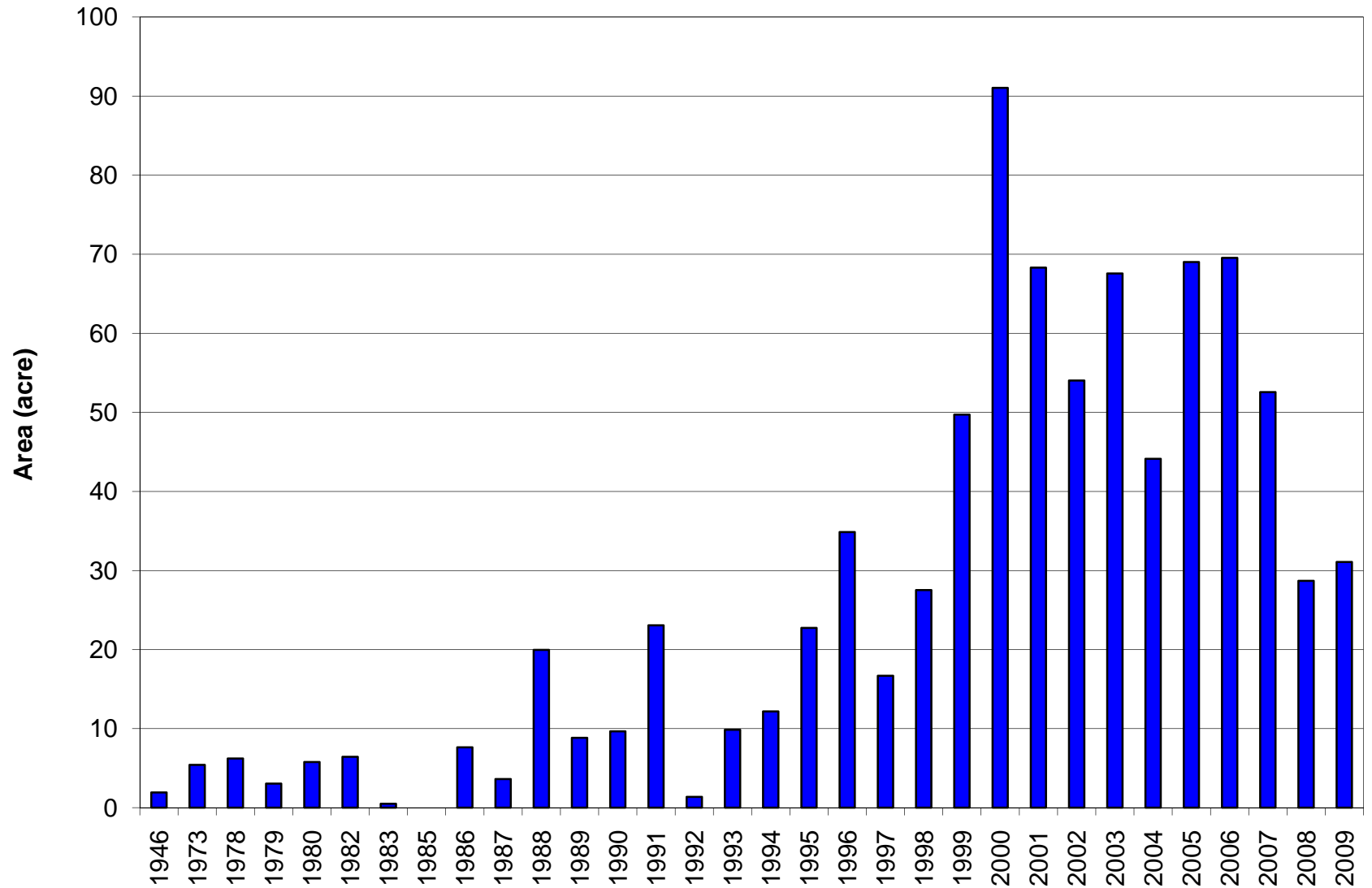
Colorado total vineyard area (2009)



Colorado total vineyard area by county

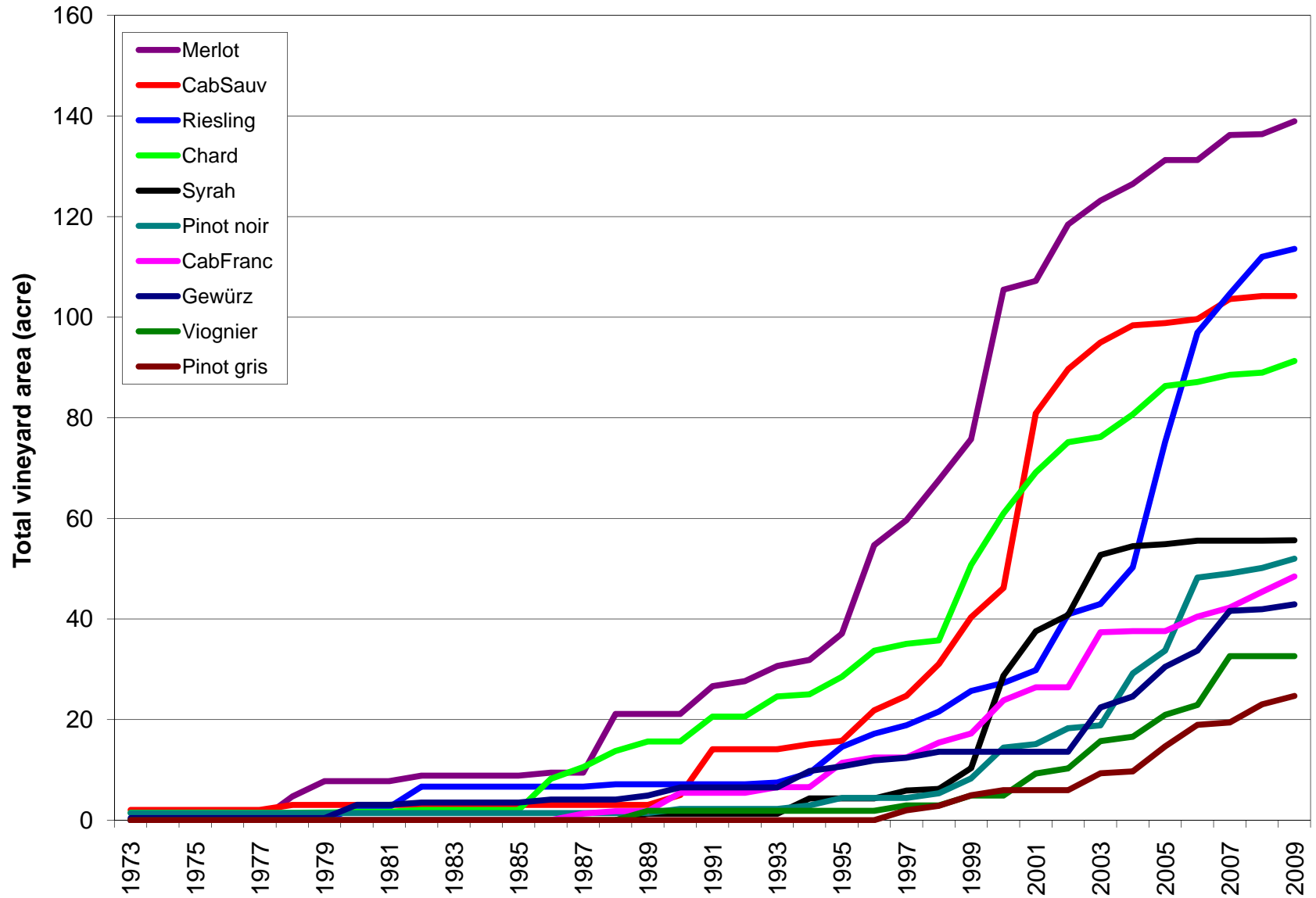


Colorado vineyards by planting year



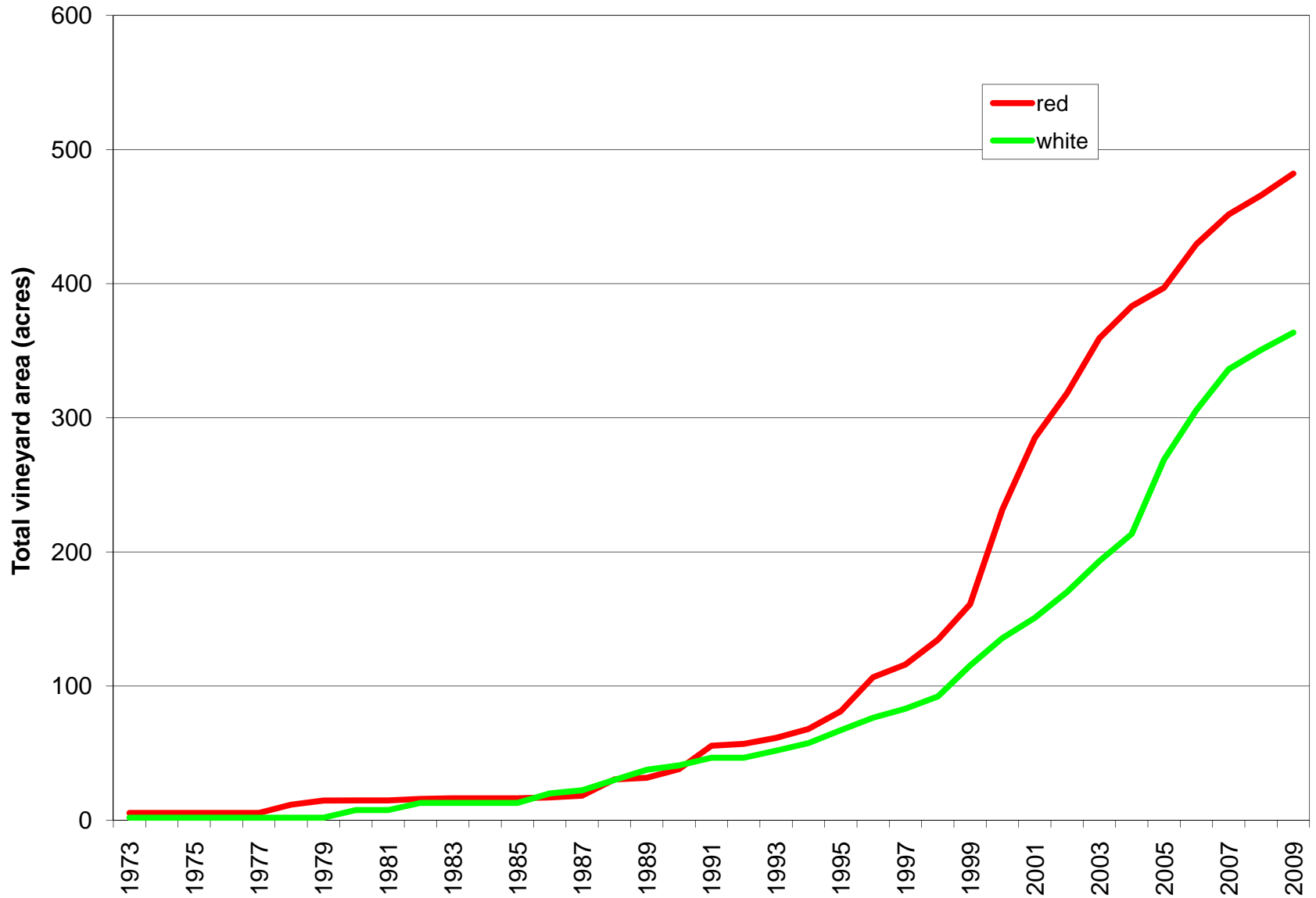
Best guess; based on all surveys since 2000

Colorado vineyard area, top 10 varieties



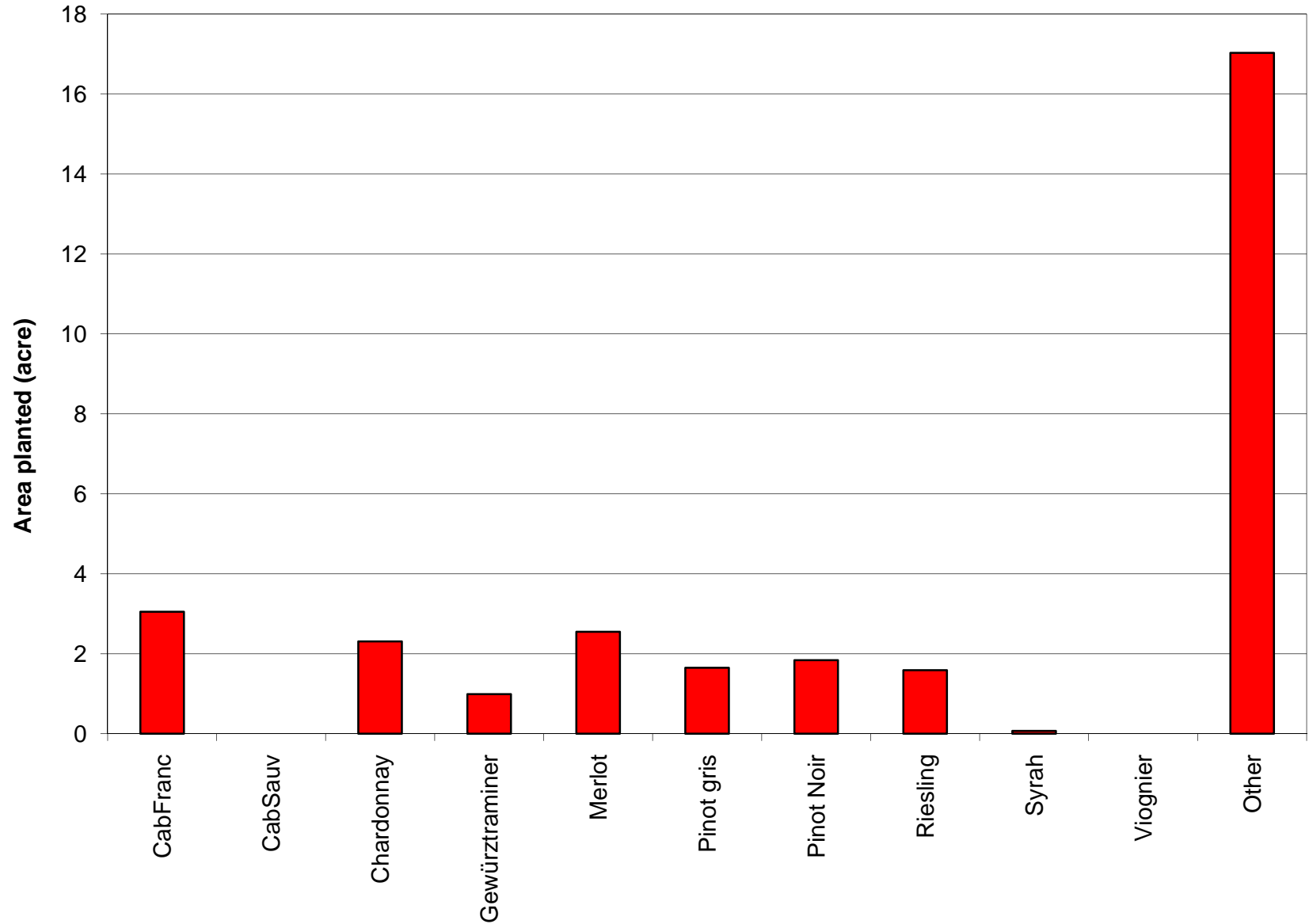
Best guess; based on all surveys since 2000

Colorado wine varieties – red & white

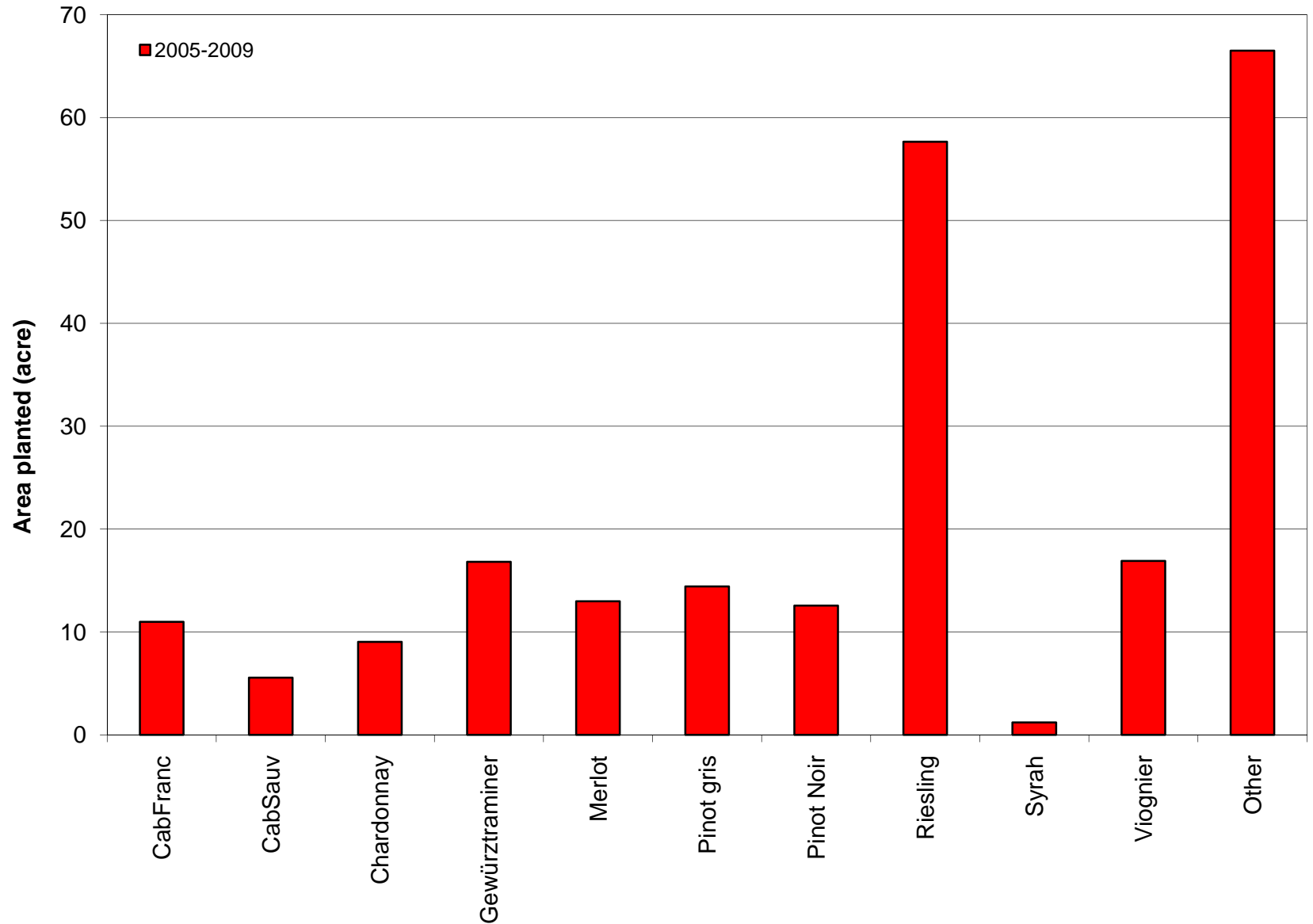


Best guess; based on all surveys since 2000

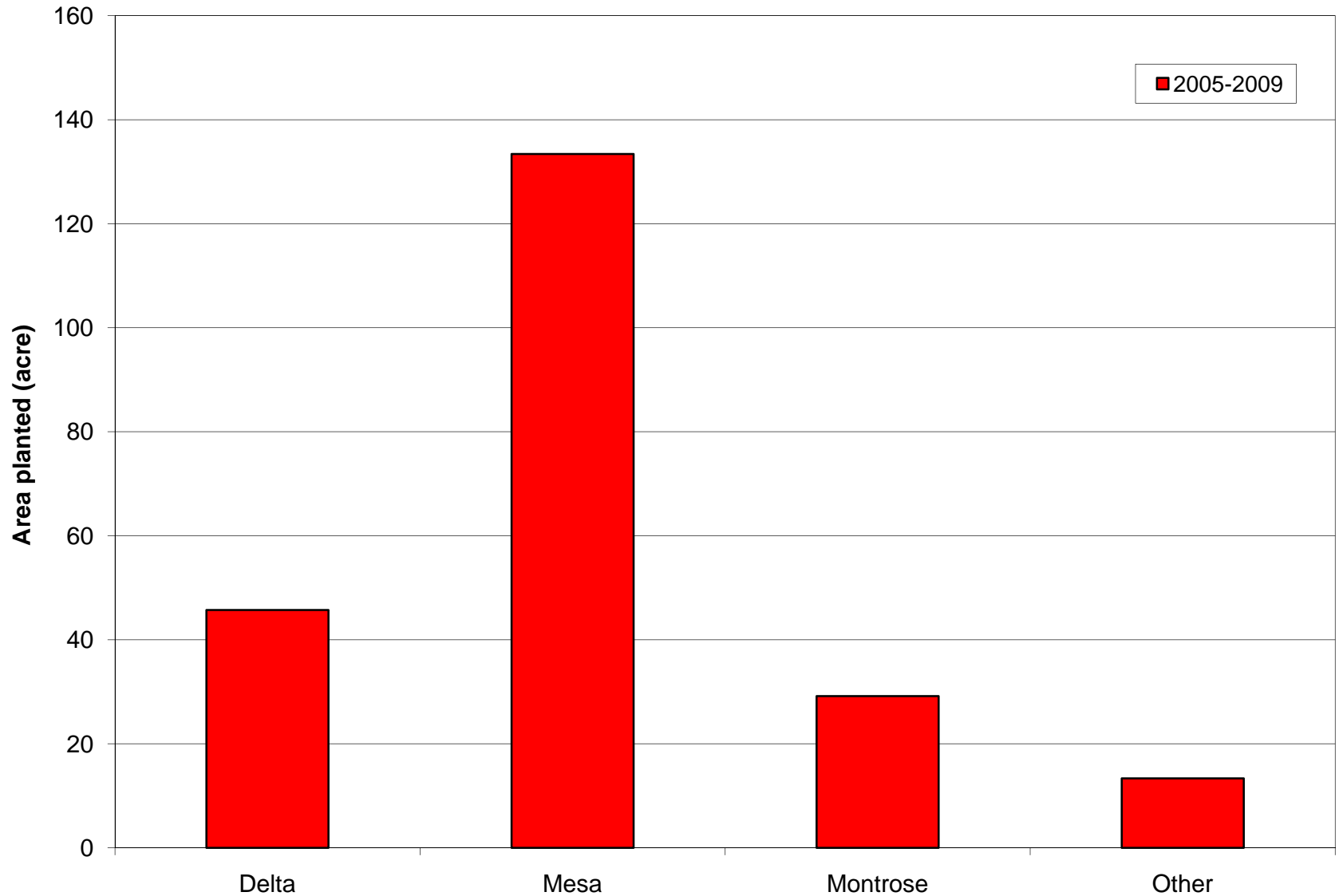
What has been planted?



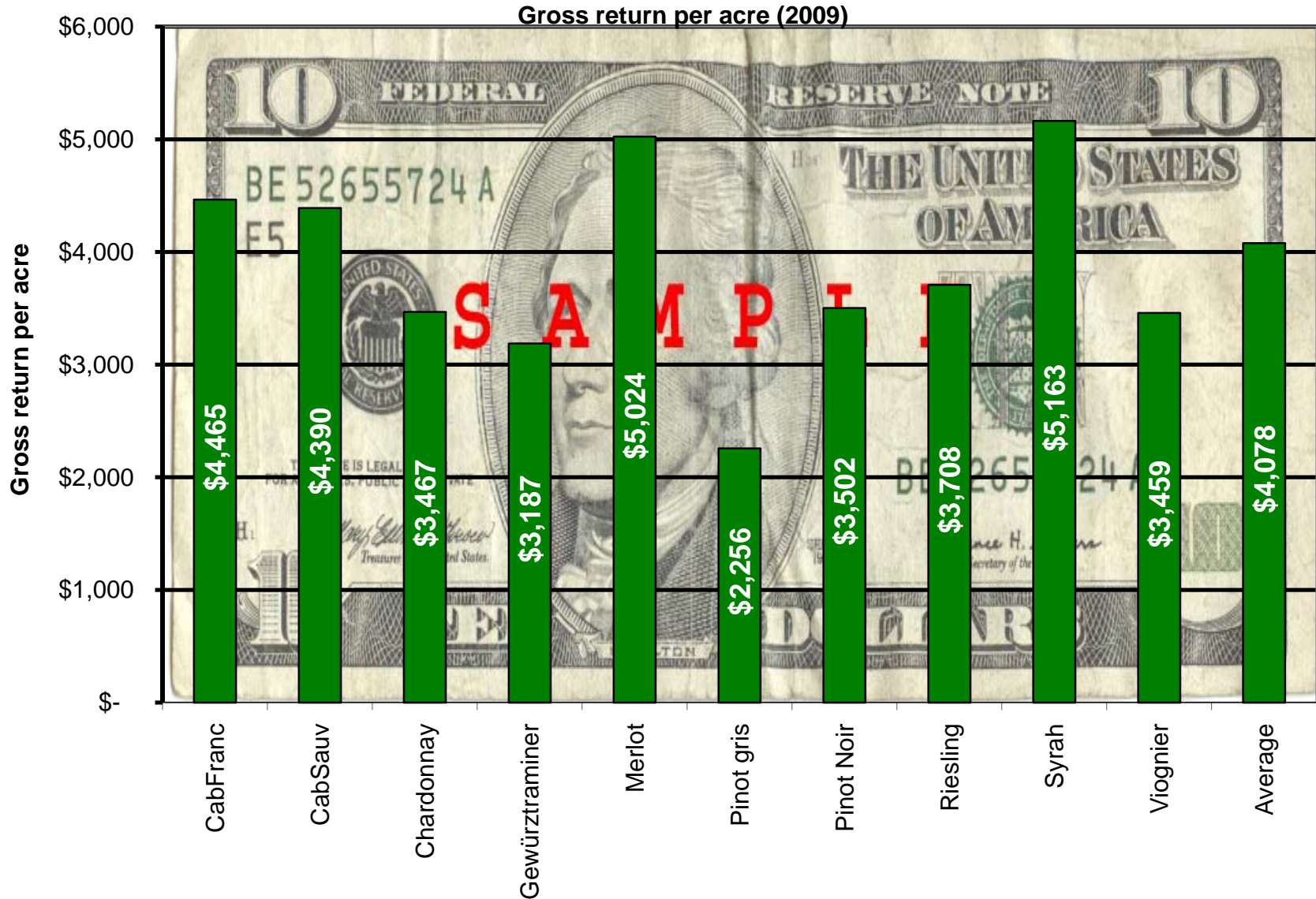
Total plantings 2005 - 2009



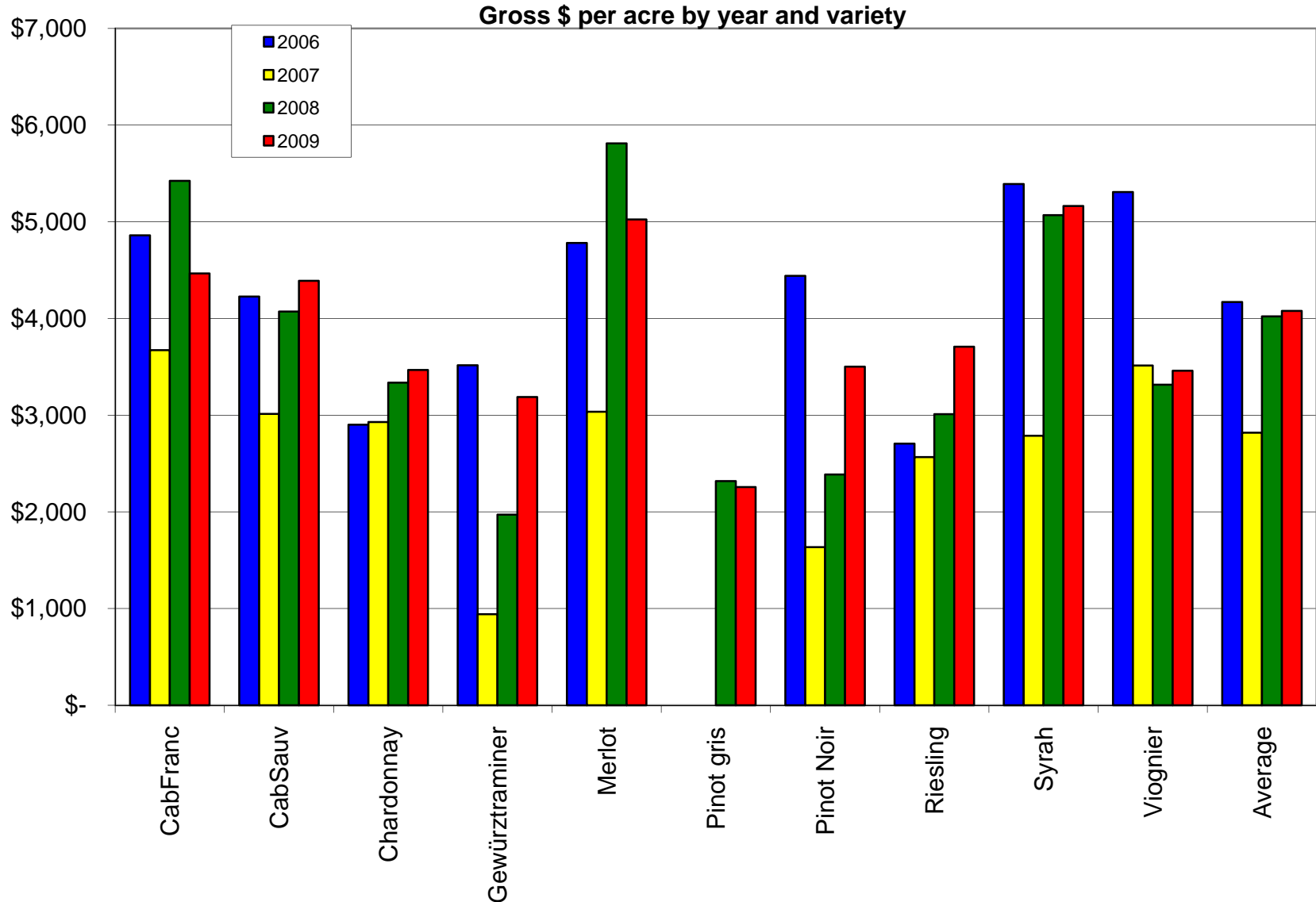
New vineyard area by county



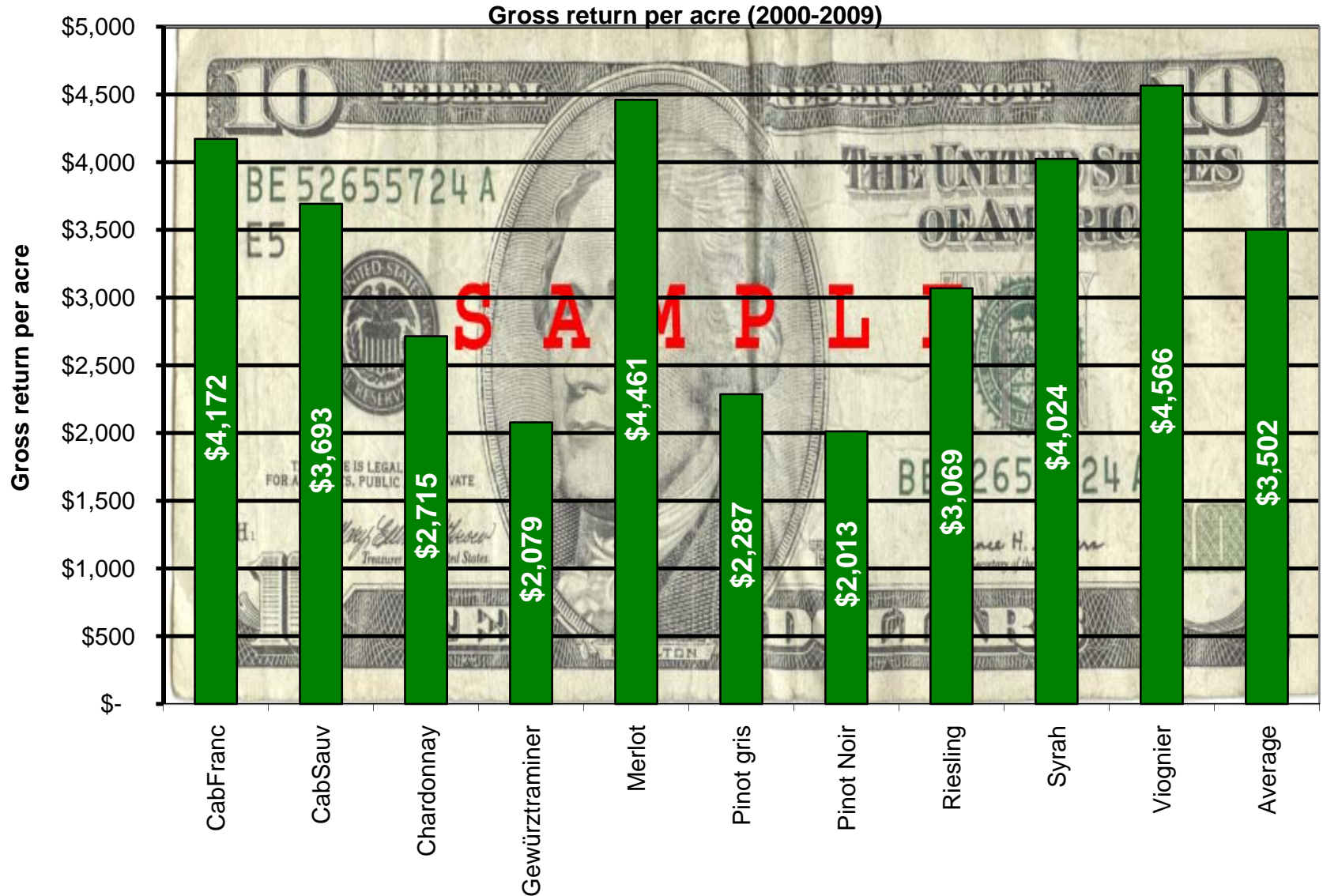
Gross return per acre, 2009



Gross return per acre, 2006-2009



Average gross return per acre, 2000-2009



“Guesstimate” of Colorado grape growing area

Total vineyard area (acre)	~1,000
Wineries	30 %
Growers	70 %
Producing vineyard area (acre)	800-850
Wineries	30 %
Growers	70 %
Average vineyard size (acre)	6.5-7.0

Note: This “guesstimate” was prepared from data provided in the 1999 to 2009 surveys. A number of growers never responded to either of those surveys. Taking into account non-respondents, I estimate a total Colorado vineyard area in 2009 of ~1,000 acres.

Acknowledgements

Thanks to

- All growers who responded to the survey
- CWIDB for funding the survey
- Amy Montano, CSU for help with data entry and analysis