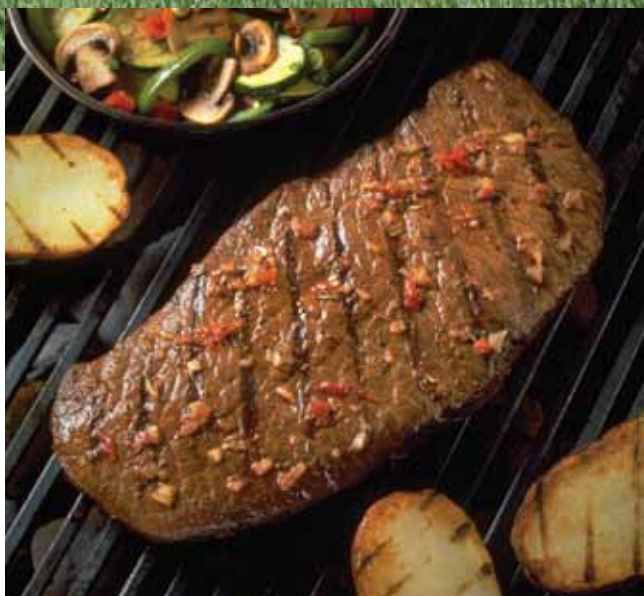


Cattle Producer's Handbook

Dairy Beef Quality Assurance



Dairy BQA: A program to educate dairy owners, managers, and employees about on-farm practices that affect food safety, consumer confidence, and quality of beef that is produced from market dairy cows and bulls at slaughter.

Dairy Cattle = Beef

Your dairy has a "steak" in the beef business.

Dairy animals are also beef animals. In fact, the dairy industry contributes about 20 percent of all the beef

produced in the United States. Furthermore, income from the sale of market dairy cows and bulls makes up about 4 to 15 percent of the total income on a dairy.

When a dairy cow or bull is culled from the herd and sold for slaughter, the seller is making the same commitment to food safety and quality as when