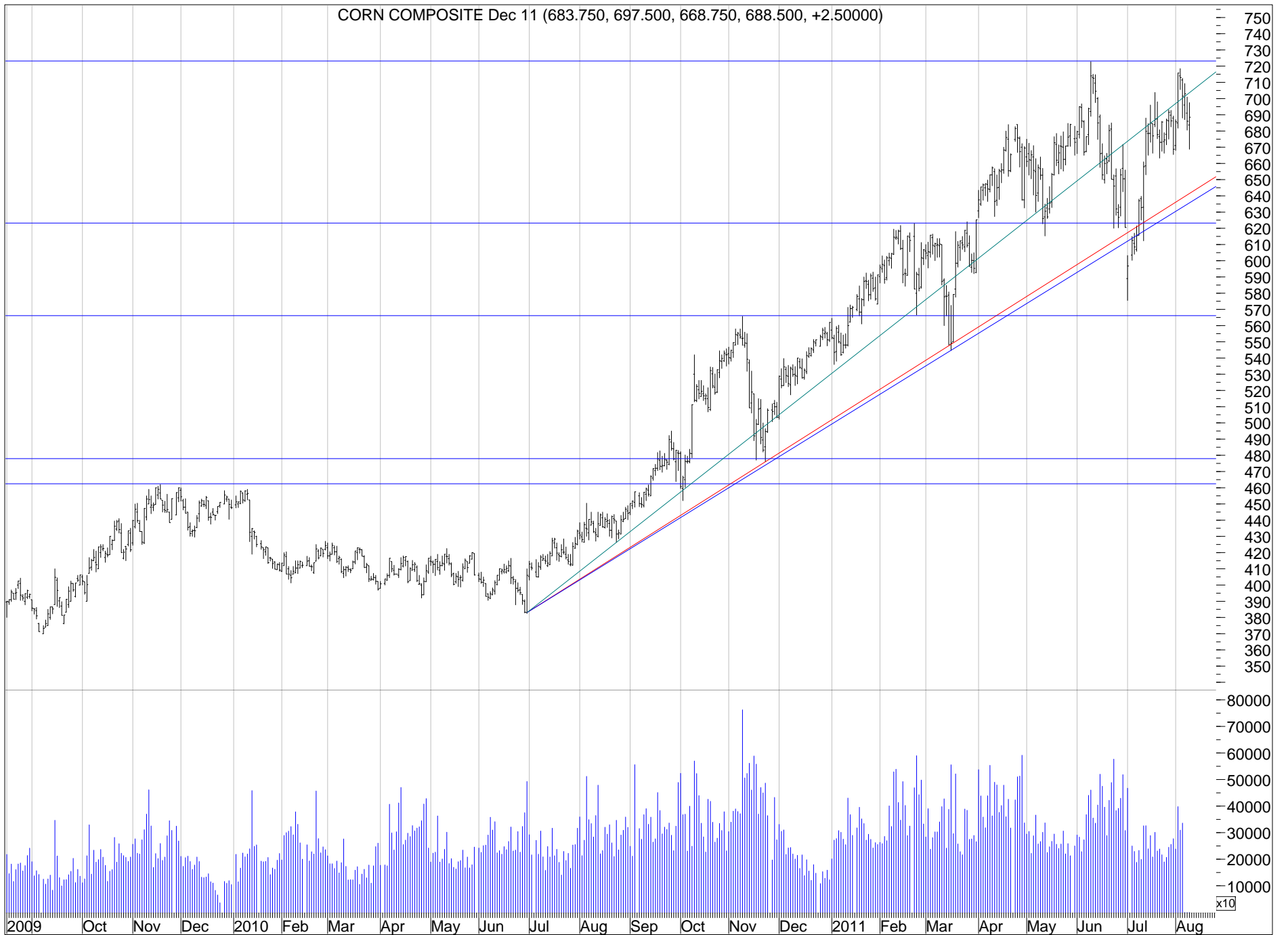
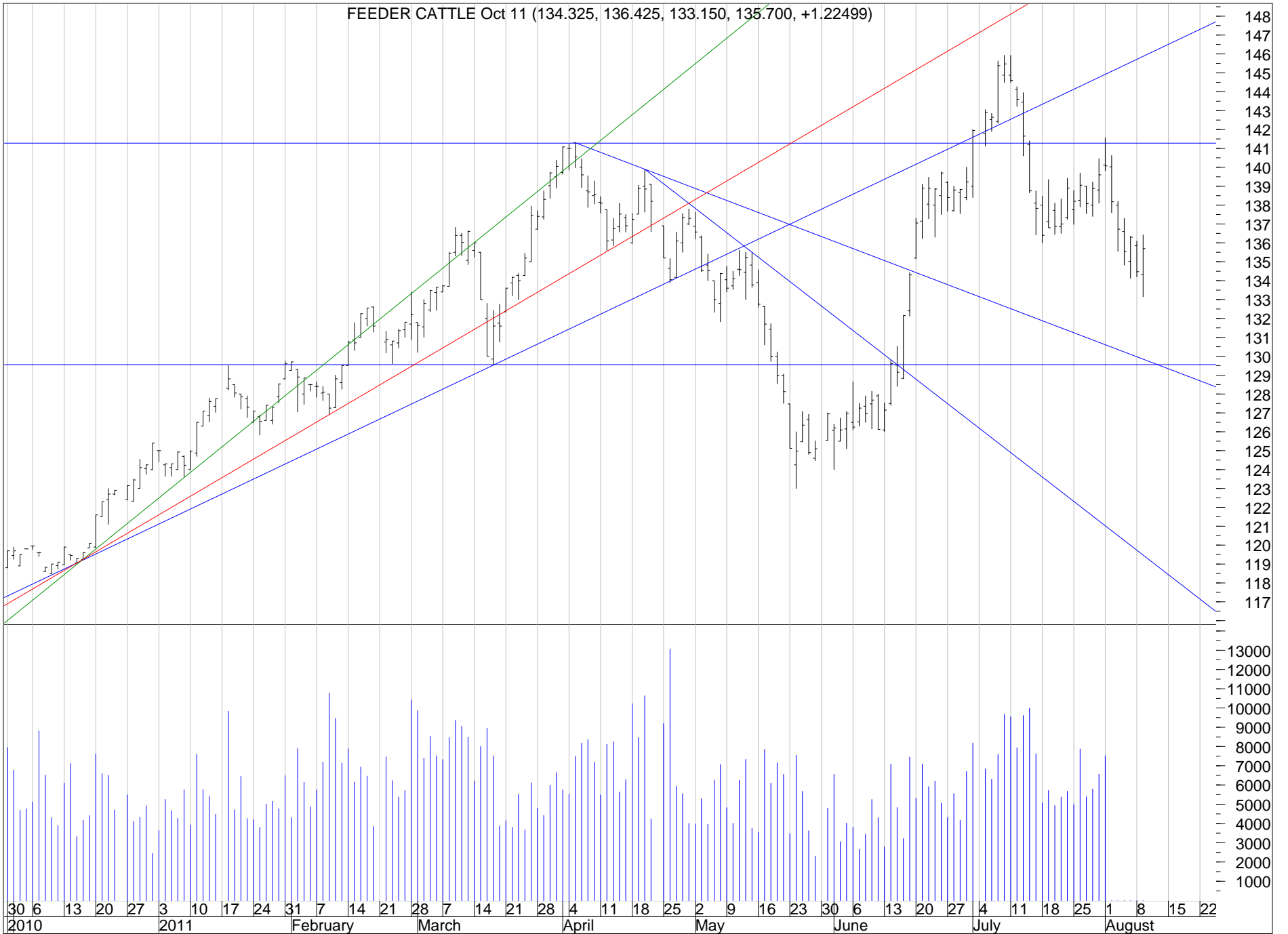
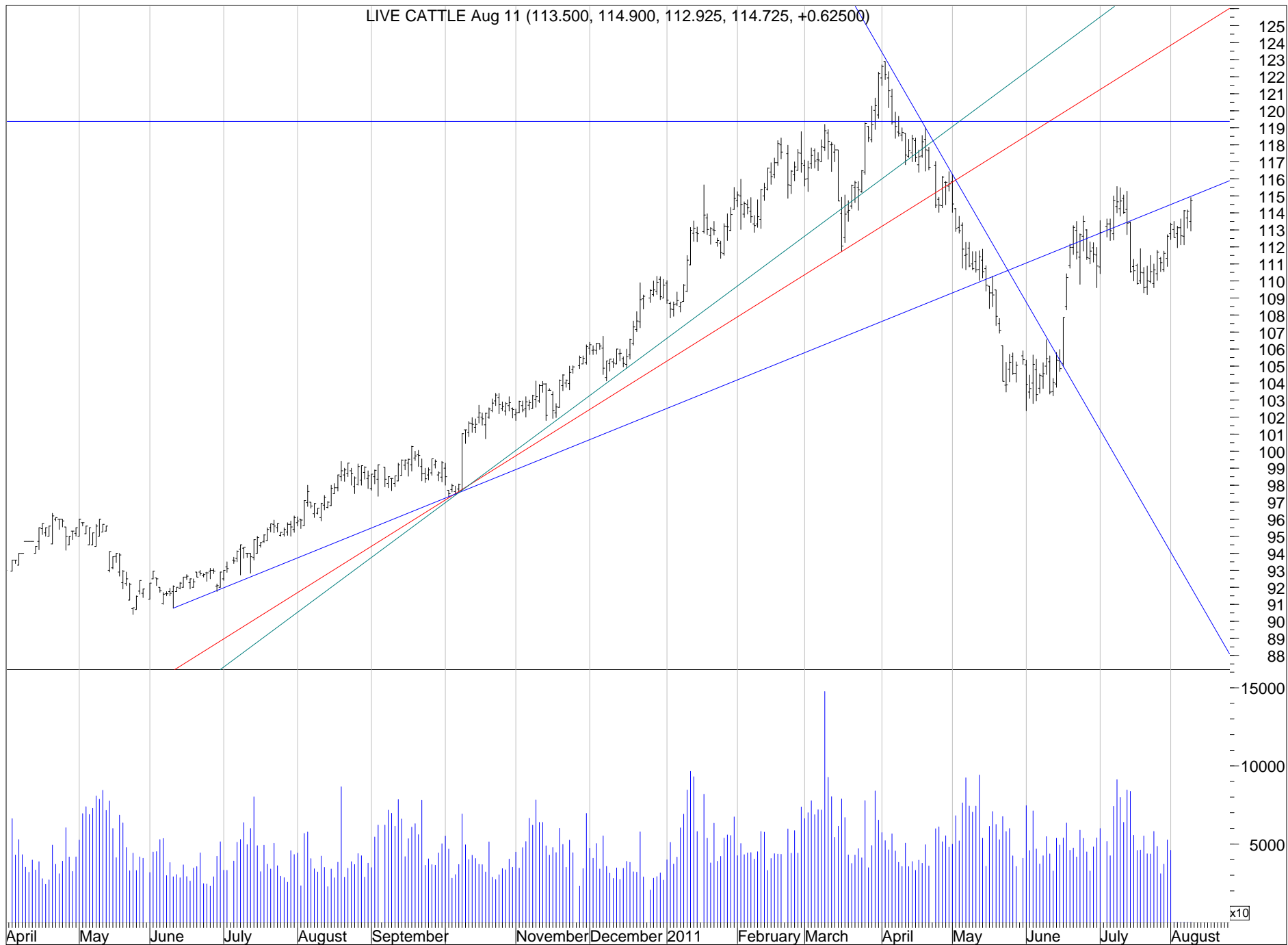
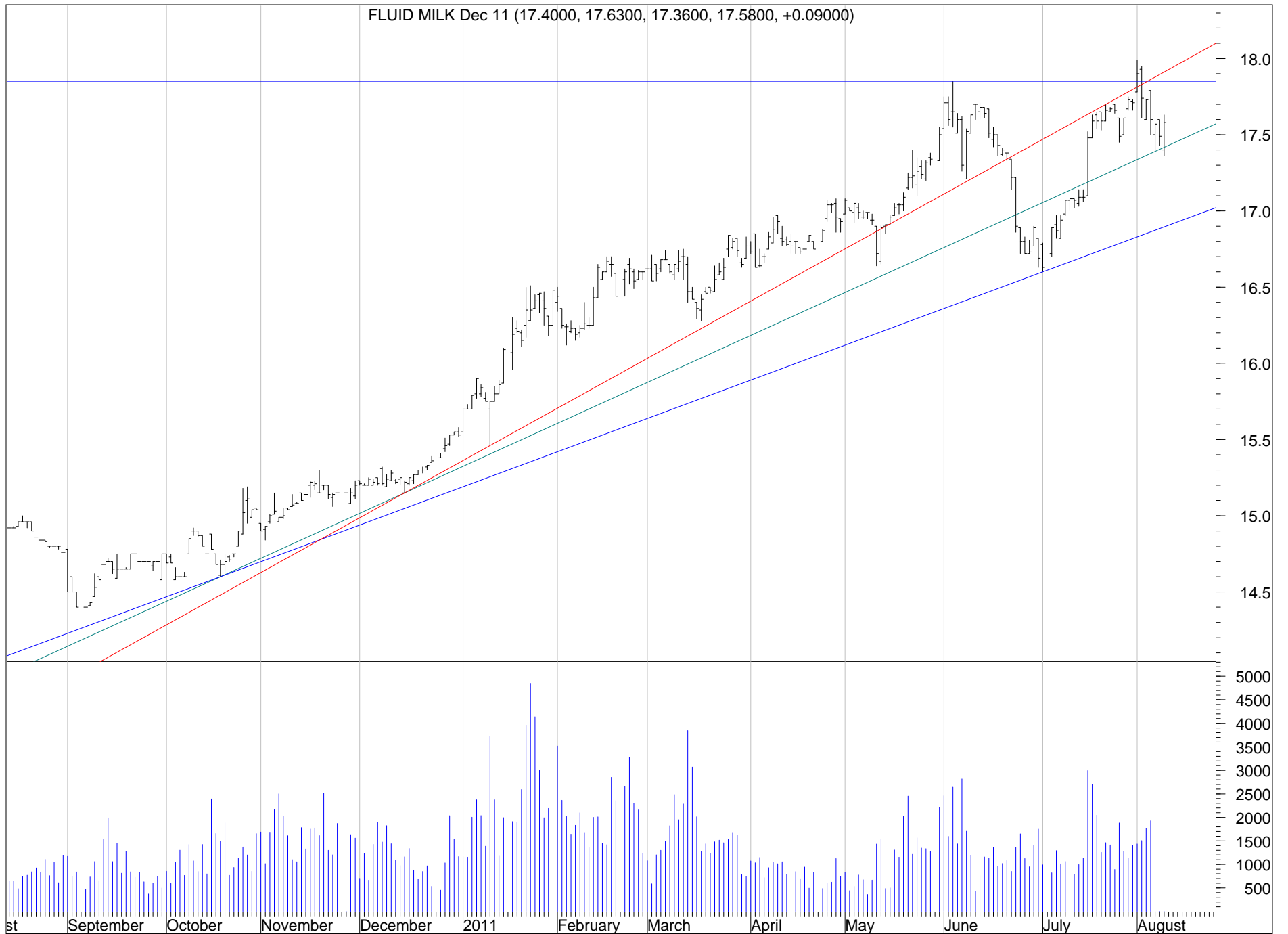


CORN COMPOSITE Dec 11 (683.750, 697.500, 668.750, 688.500, +2.50000)

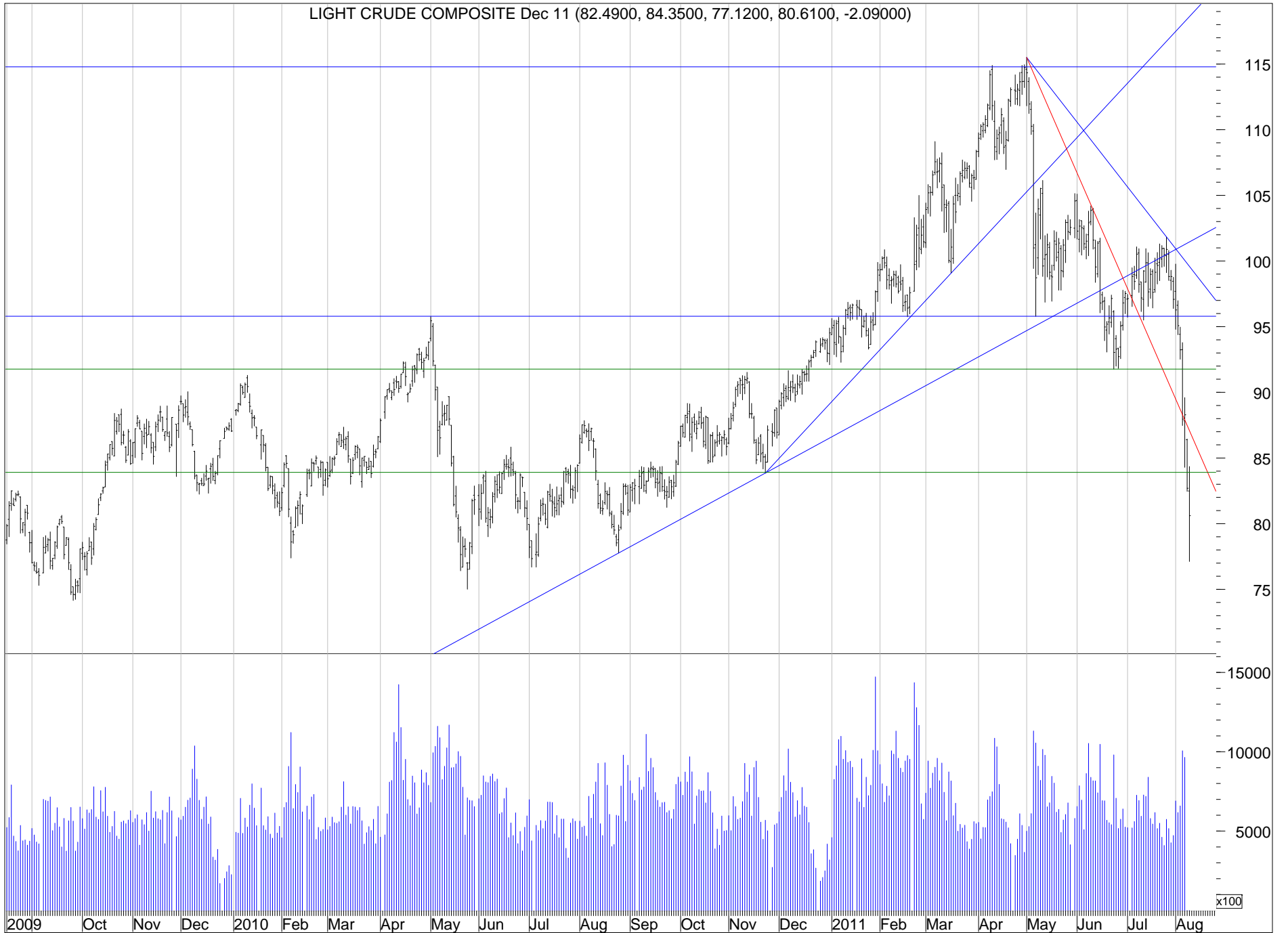


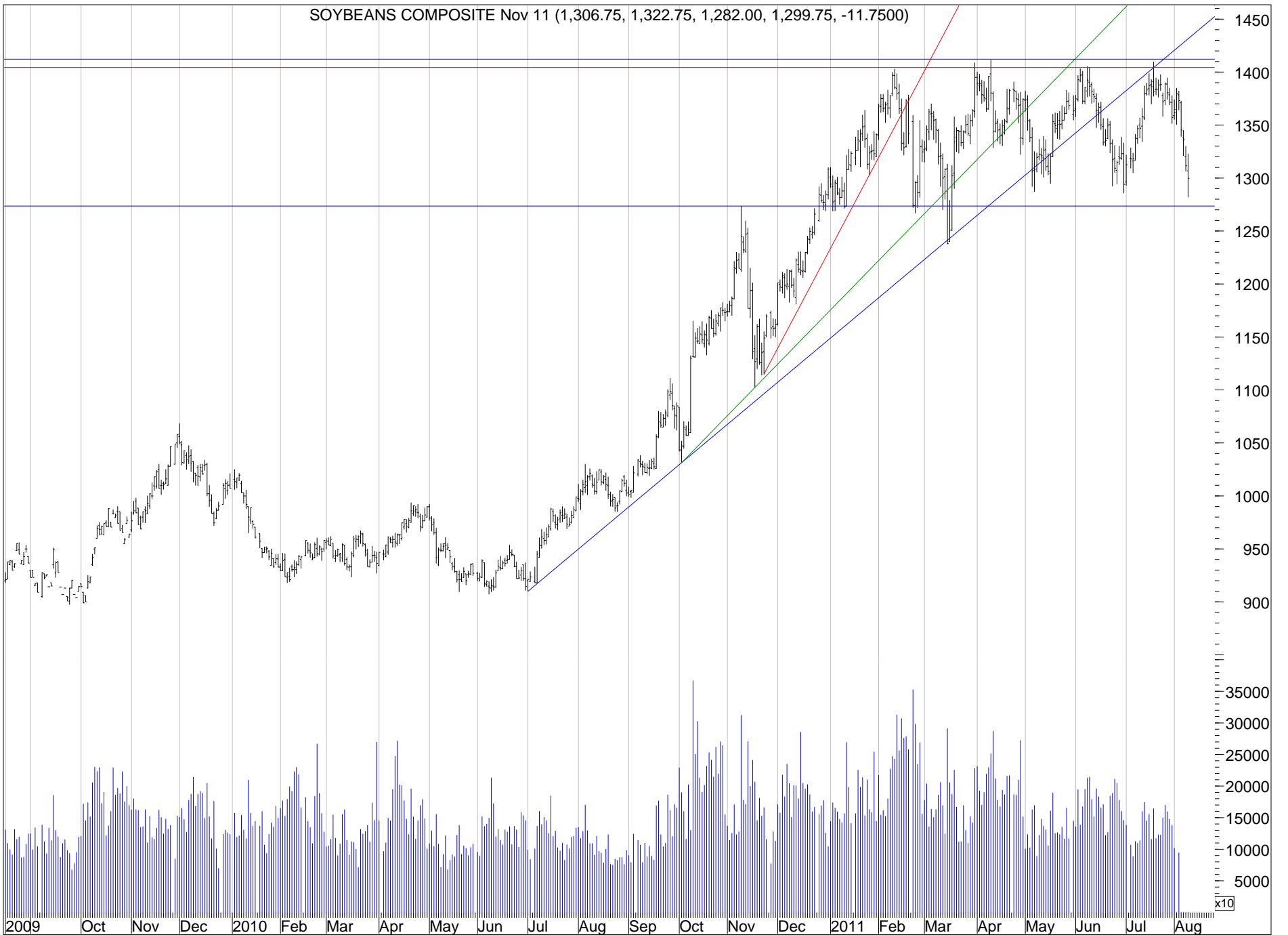


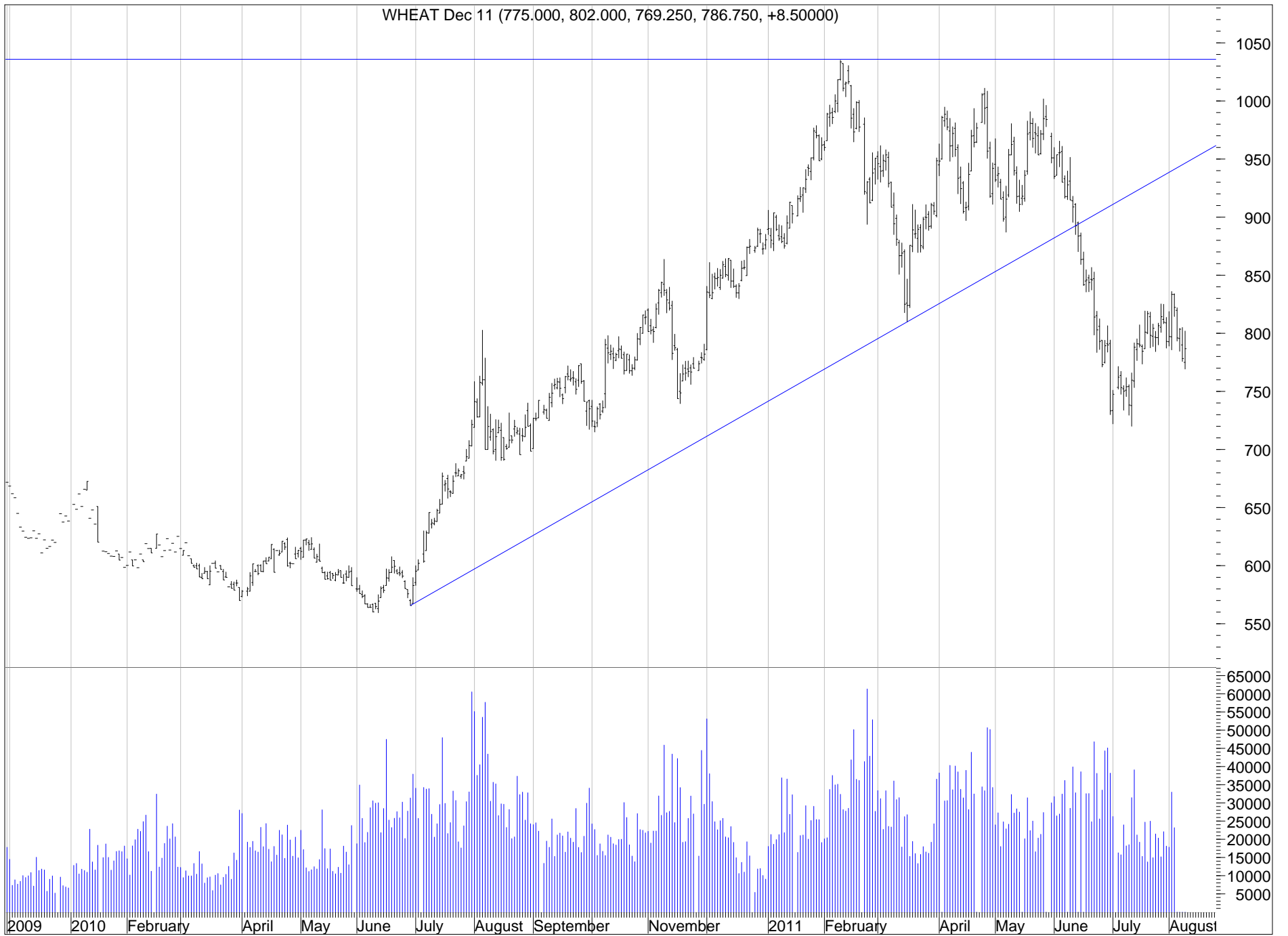




LIGHT CRUDE COMPOSITE Dec 11 (82.4900, 84.3500, 77.1200, 80.6100, -2.09000)







WHEAT COMPOSITE Dec 11 (689.000, 719.750, 681.750, 703.750, +9.00000)

