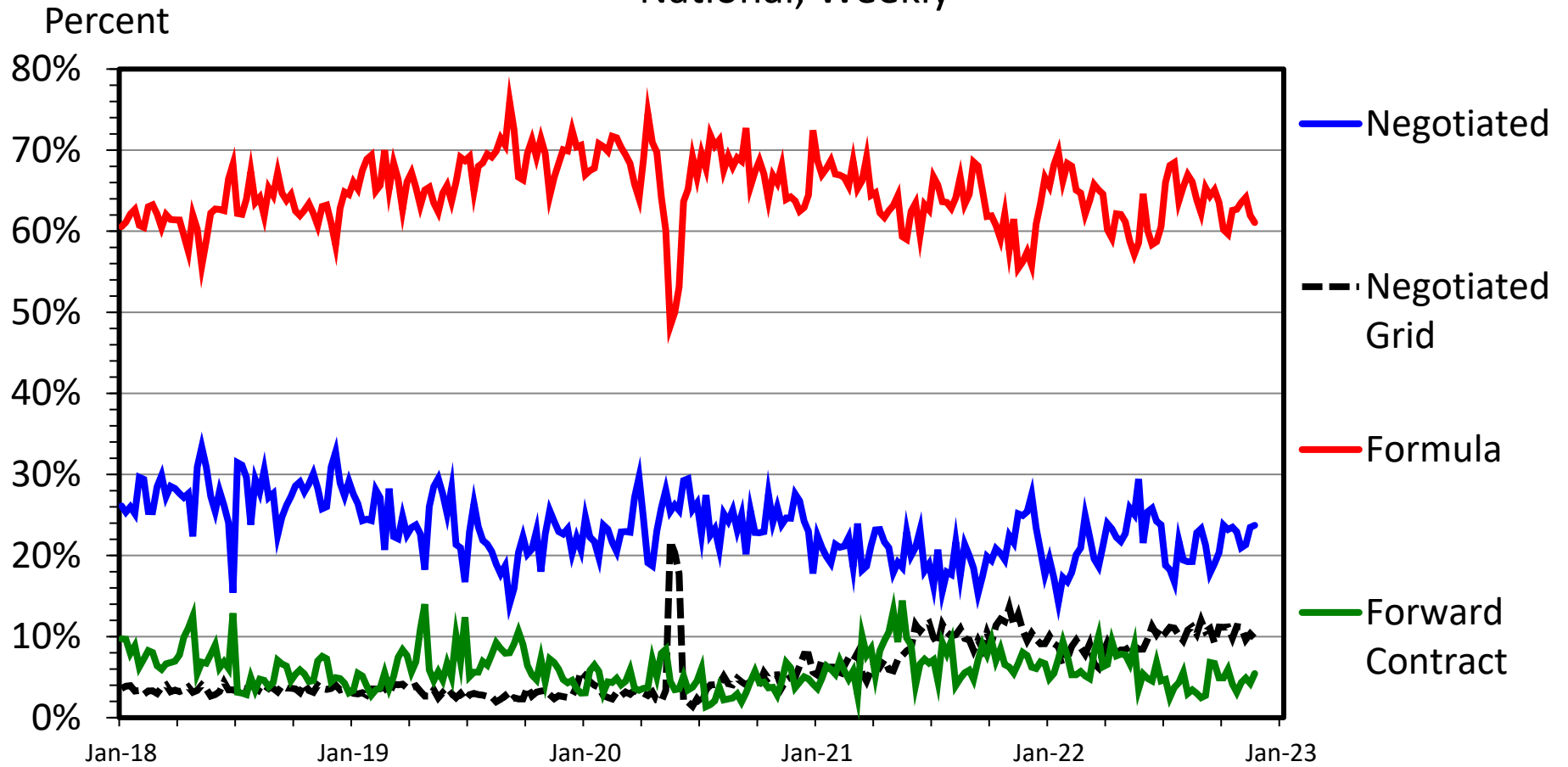


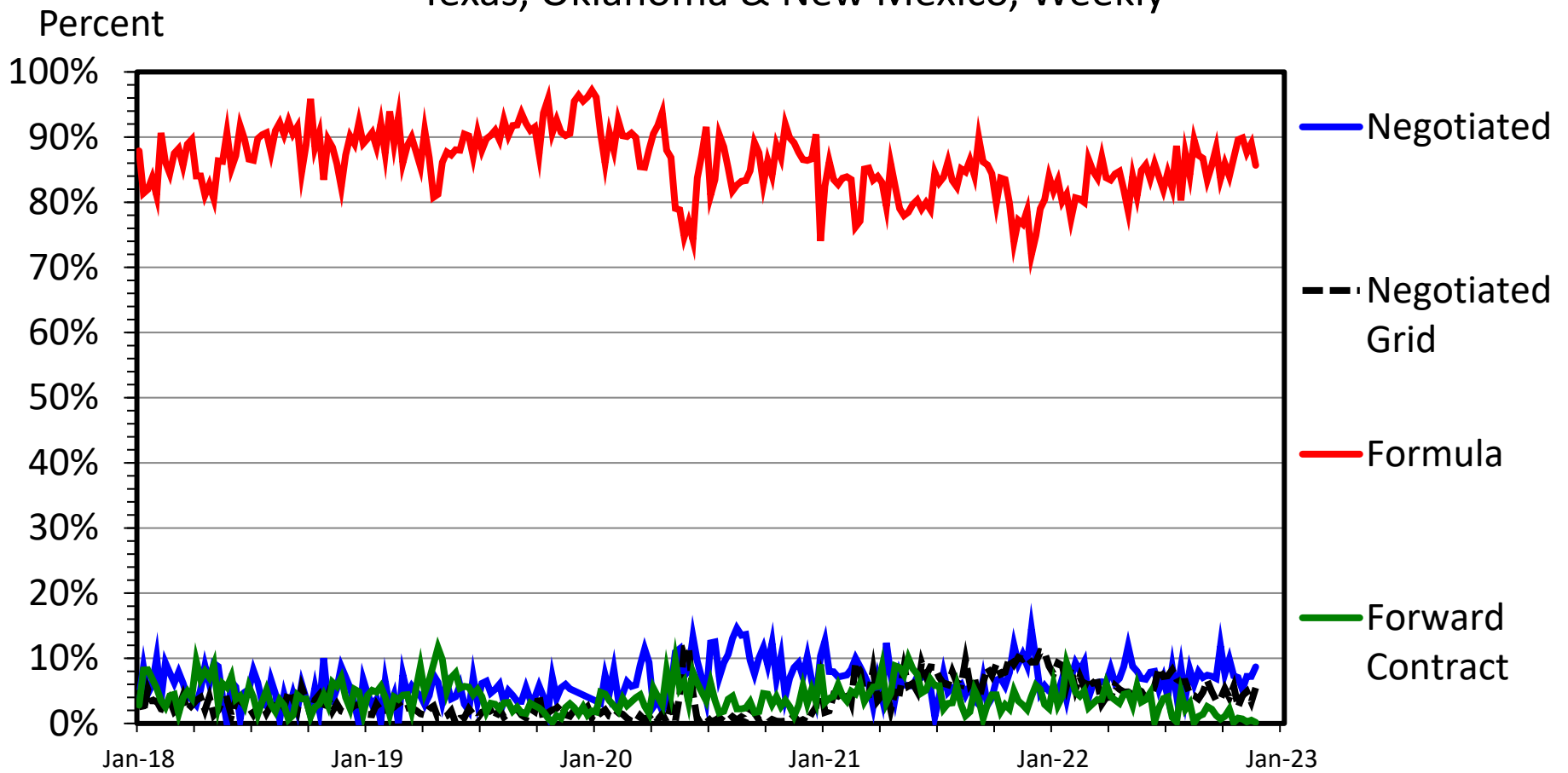
# STEERS/HEIFERS SOLD BY TRANSACTION

## National, Weekly



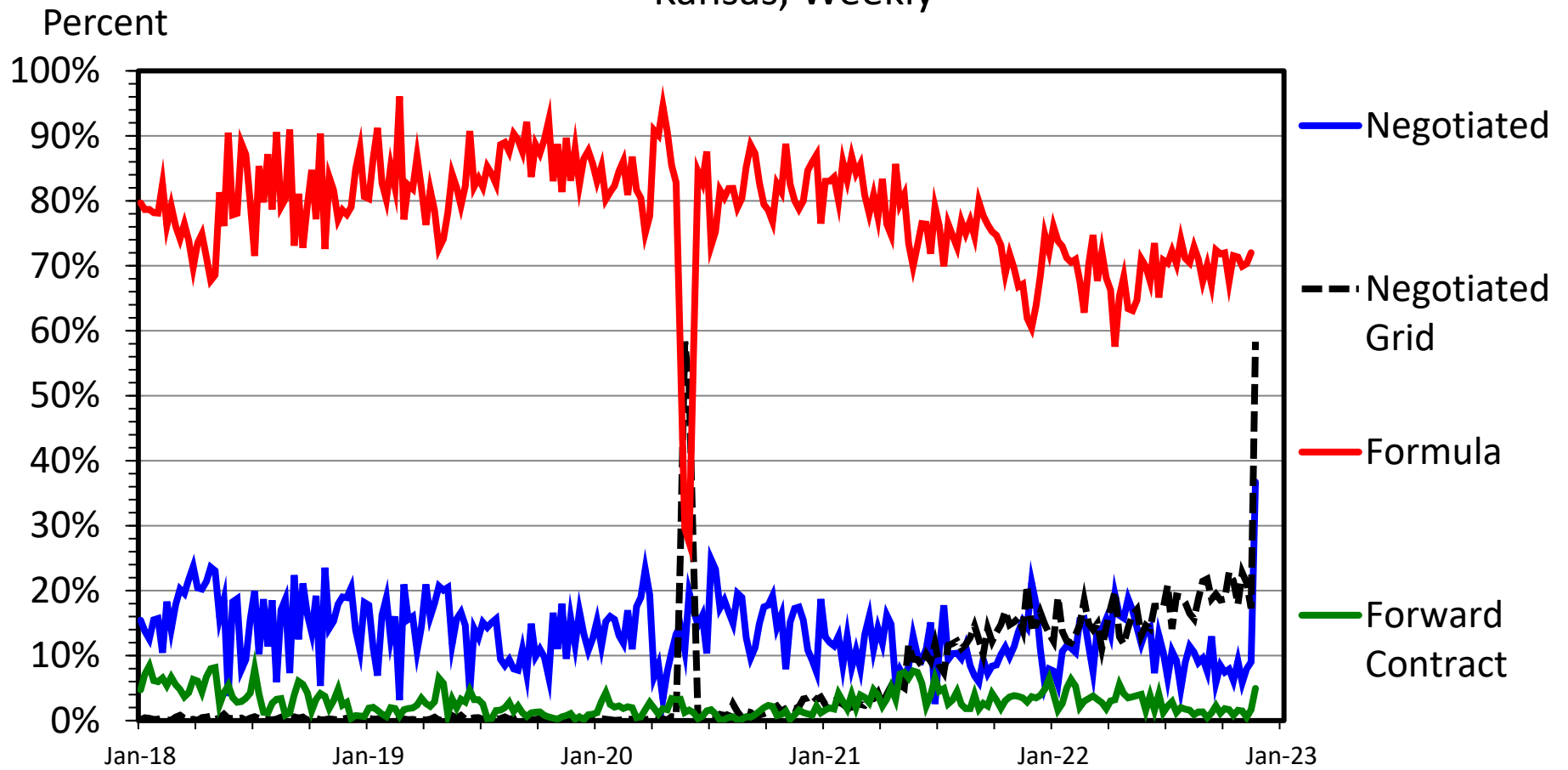
# STEERS/HEIFERS SOLD BY TRANSACTION

Texas, Oklahoma & New Mexico, Weekly



# STEERS/HEIFERS SOLD BY TRANSACTION

## Kansas, Weekly



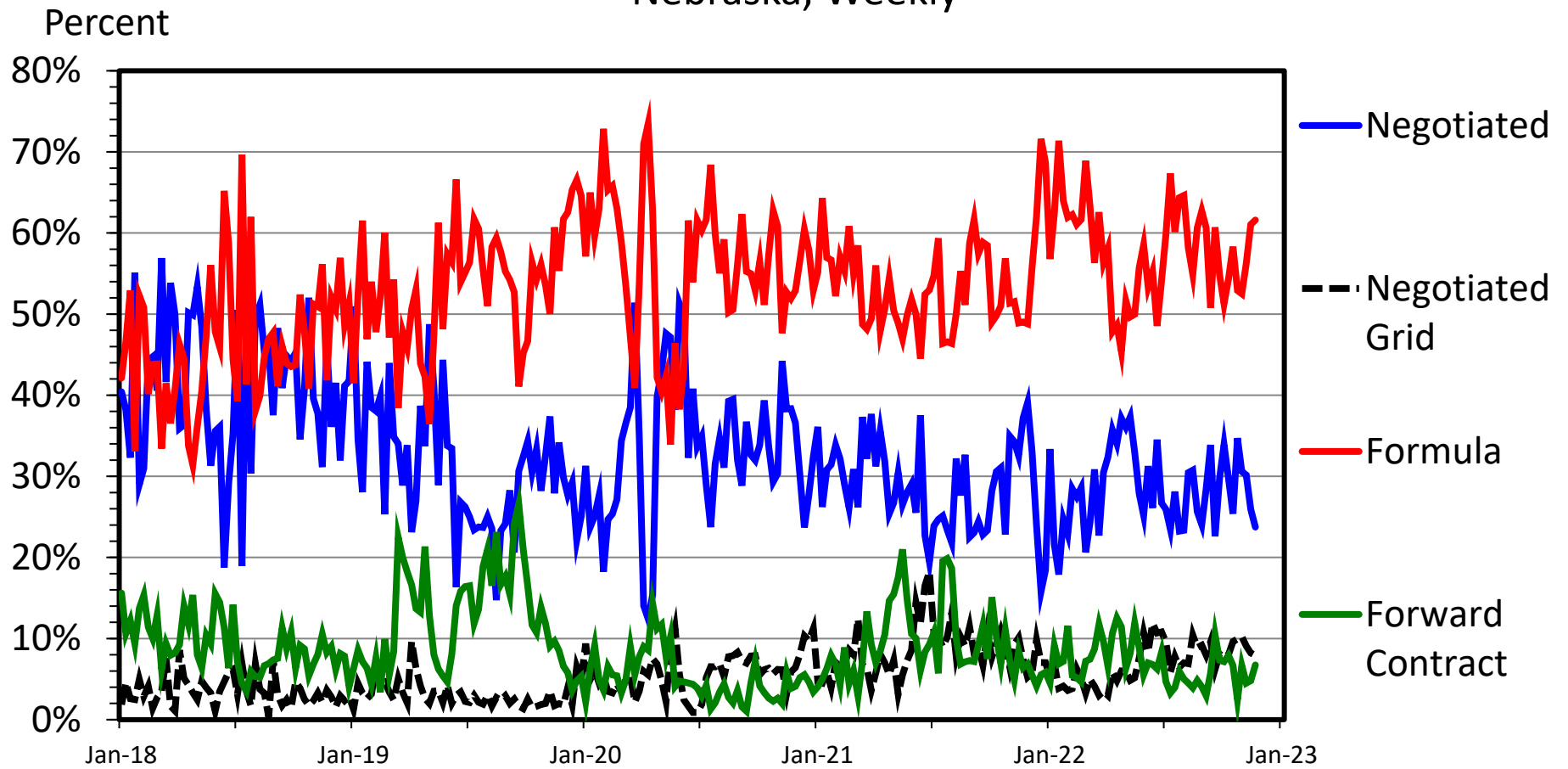
Data Source: USDA-AMS

Livestock Marketing Information Center

11/25/22

# STEERS/HEIFERS SOLD BY TRANSACTION

## Nebraska, Weekly



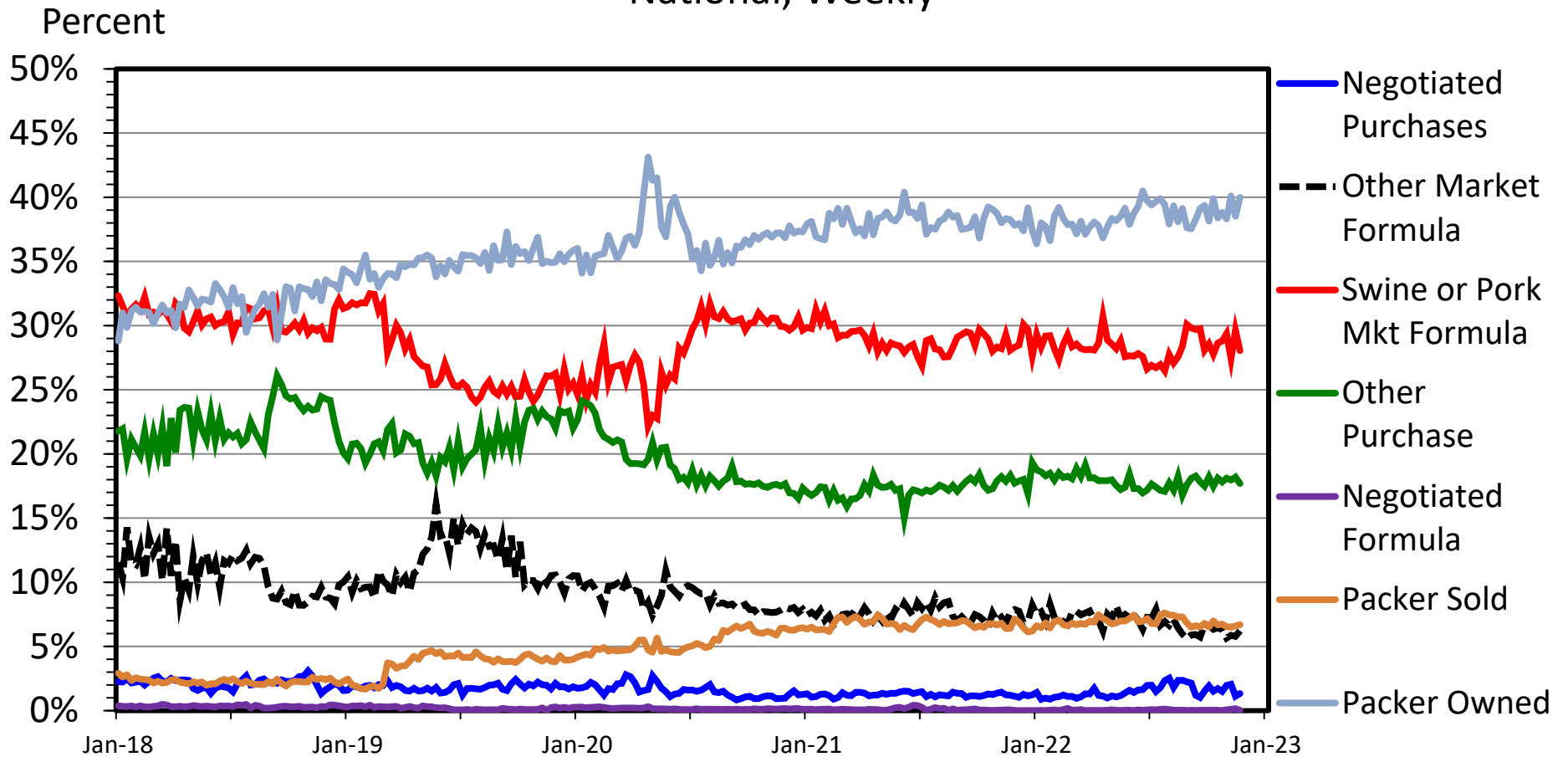
Data Source: USDA-AMS

Livestock Marketing Information Center

11/25/22

# HOGS SOLD BY TRANSACTION

## National, Weekly



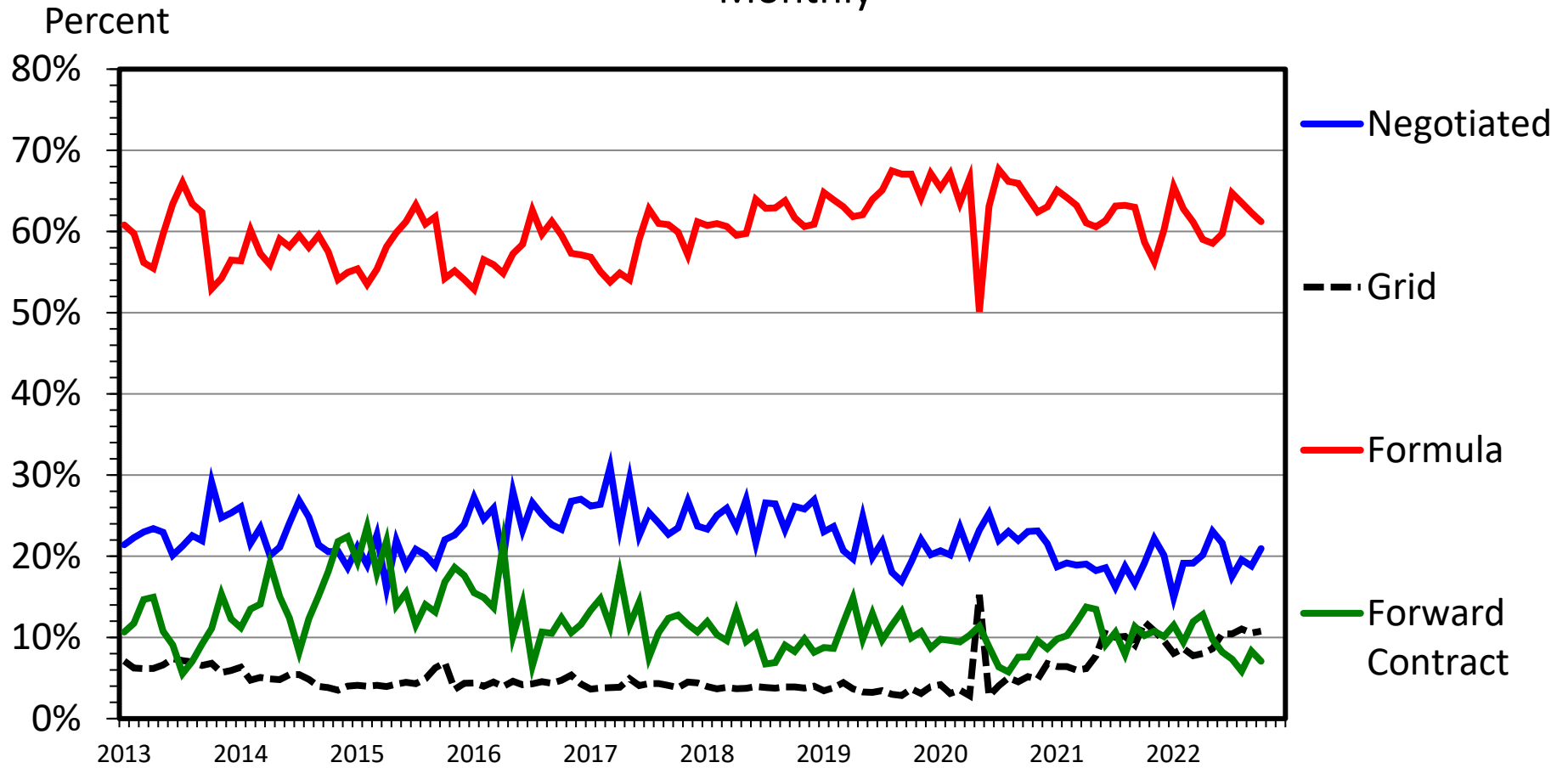
Data Source: USDA-AMS

11/25/22

Livestock Marketing Information Center

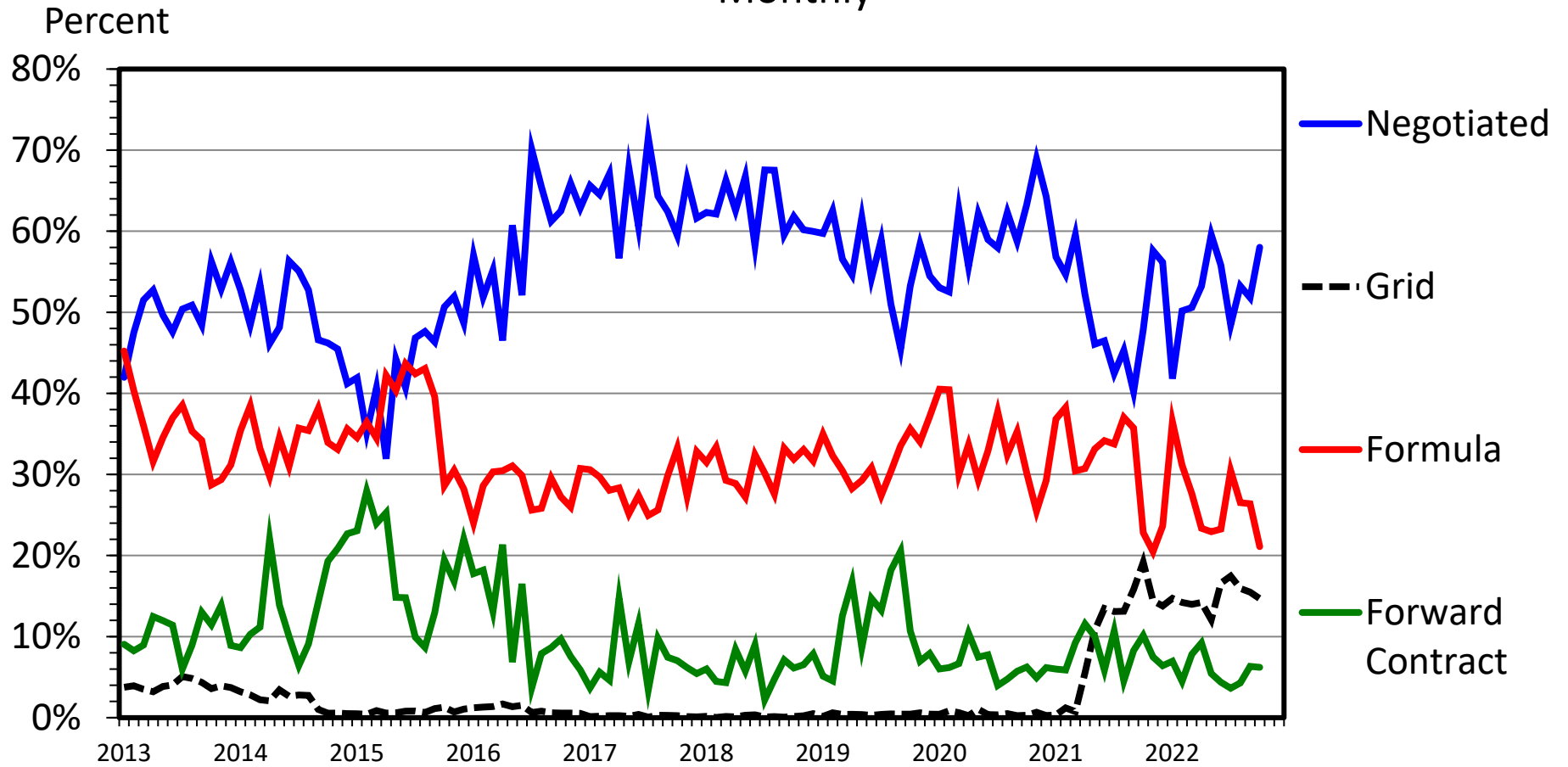
# TOTAL CATTLE SOLD BY TRANSACTION

## Monthly



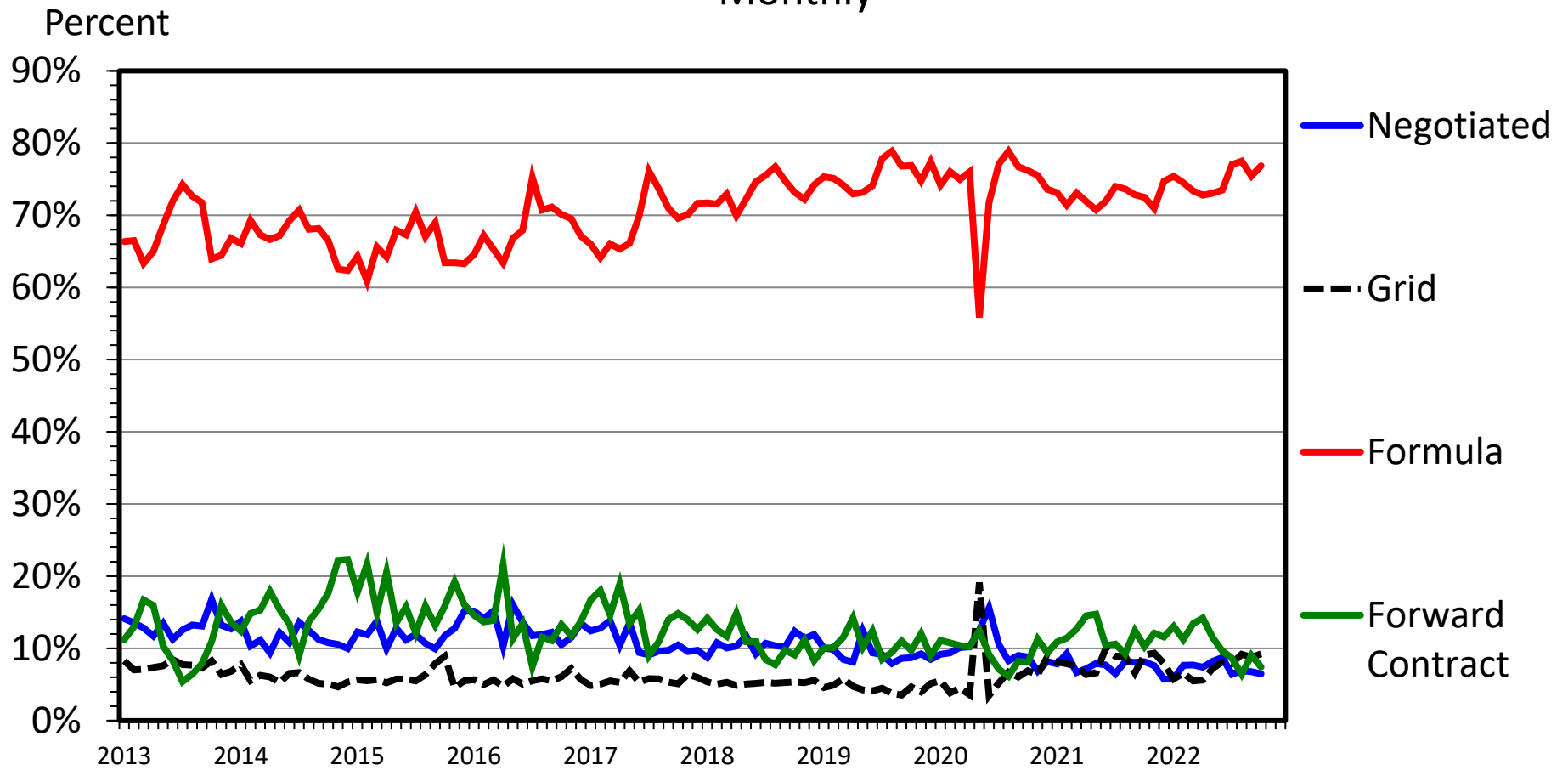
# CATTLE SOLD ON A LIVE BASIS

## Monthly



# CATTLE SOLD ON A DRESSED BASIS

## Monthly



Data Source: USDA-AMS

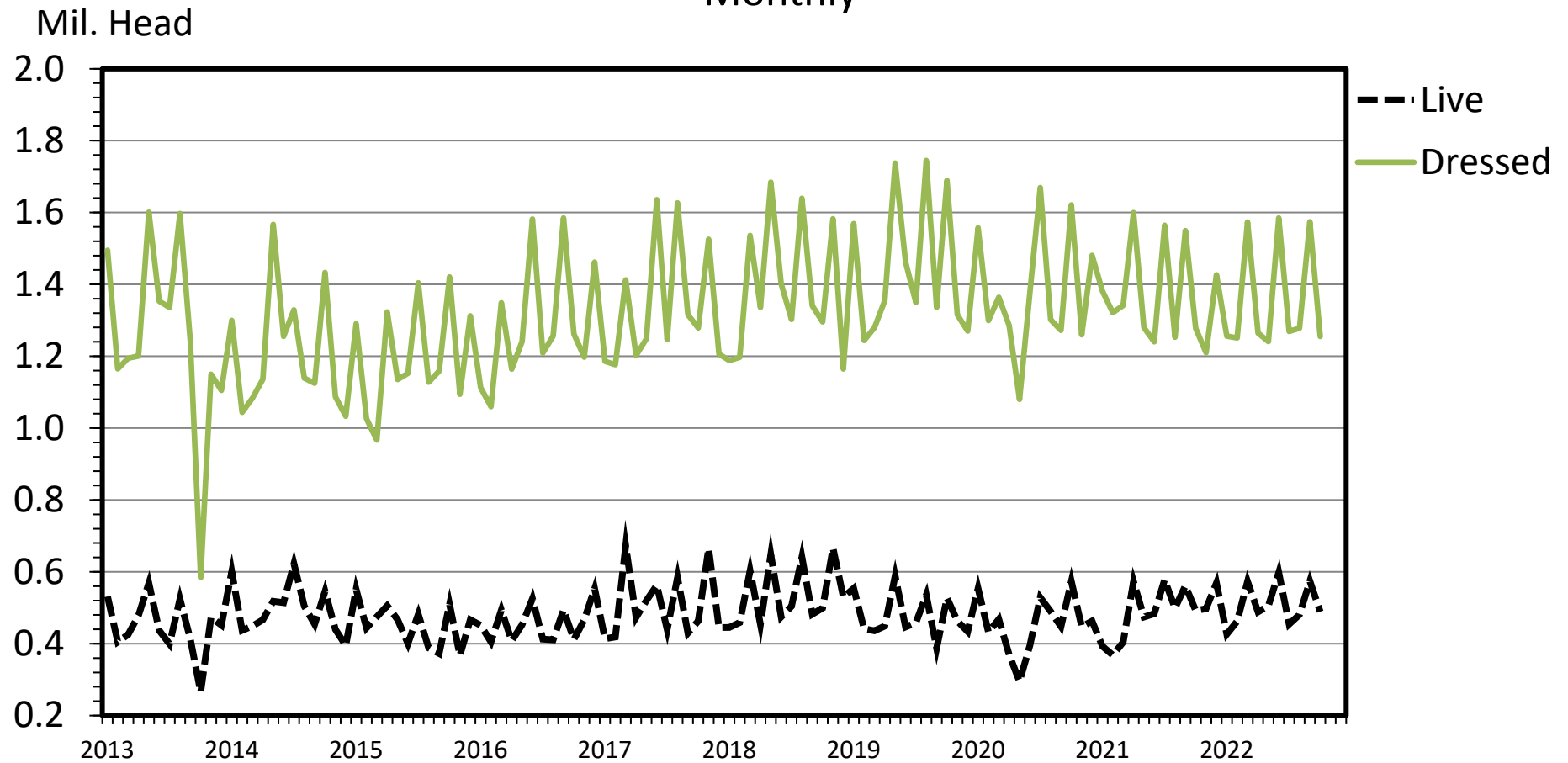
Livestock Marketing Information Center

8/12/22



# CATTLE SOLD: LIVE vs DRESSED

## Monthly



Data Source: USDA-AMS

Livestock Marketing Information Center

8/12/22

# HOGS SOLD BY TRANSACTION

## National, Monthly

